

BISHOP'S CASTLE NEWS



**OCTOBER 2025
TO
NOVEMBER 2025**

Issue No.101



Welcome to the 101st Edition of the Town Newsletter



The Mayor Josh Dickin

Hello all,

Welcome to this latest edition of the Town's newsletter.

As the nights draw in, and the mornings get longer, with that crisp autumn feel truly upon us, it is time to reflect on what a Summer it has been for our glorious Town.

The usual Summer events have all been and gone and the committees can breathe a huge

sigh of relief, as well as give themselves a big pat on the back. They have showcased our Town and proved once again how a small town can put on great, well-established events.

Organising an event or volunteering on the committees, comes with the usual territory of trying to make ends meet so that the events in question can happen the next year. They don't happen without your support so please help our events when you can. A lot of the events hold their AGMs over the next couple of months, so if you want to get involved keep your eyes peeled for more details with the various committees.

I must say a massive thank you to the Michaelmas Fair organisers who put on a great show despite the biblical rains. Well done. It isn't easy work to put on that event, I know.



It is great to be able to write up that our War Memorial will be refurbished before Remembrance Sunday. It has taken a few years to get this over the line. I thank you all for your patience, it will be great to see the end result.

Also, it is absolutely fantastic to see the Three Tuns reopening. It will hopefully start to return to its former glory and shrug off its recent, rocky past. Please support the reopening and embrace it. It's been a battle to get to this point.

Staying on the pubs, the King's Head now has a new tenant, Neil Sanders, we wish him and his staff the best of luck. The King's is another great asset for our Town.

Further into this newsletter, events are listed. Please note down and keep your eyes peeled for further details of the Bonfire Night planned to take place on Saturday 8th November in the playing fields.

A meeting to form a Town Centre Working Group will be at the Six Bells at 7.30pm on Wednesday 15th October. Do come along and join us.

All the best

Josh



MAYOR'S OPEN OFFICE

**Every Monday
2.30 - 5.00pm**



josh.dickin@bishopscastletowncouncil.gov.uk



07530 691106

Dates for your Diary

Wednesday 15th October	Town Centre Working Group at Six Bells
Saturday 25th October	Apple Pressing, Bank House 9.30am- 4pm
Sunday 26th October	Concert for Christian Aid in Church 3pm
Sunday 9th November	Remembrance Sunday 10.45am
Thursday 20th November	Coffee Morning 10.30 am at Abbeyfield to raise funds for Bishop's Castle Dial-a-Ride.
Friday 28th November	Posh Bingo at SpArC
Saturday 6 th December	Christmas Lights Festival
Saturday 6 th December	Craft Fair in Church 11am - 4.30pm
Saturday 8th November	Bonfire Night on the Playing Fields
Saturday 13th December	Marches Choir Concert in Church 7.30pm

Bishop's Castle Library

Tues 14th October	Hearing Loss Support Hub (booking essential)
Thursday 16th October	Digital Drop in 2pm - 3pm
Friday 17th October	Friends Coffee Morning 10am -12pm (with rep from Alzheimer's Association)
Tuesday 28th October	Spooky Stories 3.30pm
Friday 31st October	Funnybones Stories and Crafts 2pm
Monday 10th November	**New** Rhyme Time 10.30am - 11.00am
Tuesday 11th November	Hearing Loss Support Hub (booking essential)
Friday 28th November	Friends Coffee Morning 10am-12pm

Tots and Tales Duplo Club	every Tuesday	10 am–11am
Family Board Game Club	every Friday afternoon	3.30pm-5.00pm
Lego Club	every Saturday morning	10am-12.30pm

Going Wild

4 th & 25 th Oct	Kids Club, Wintles Wood, 9am–12pm
7 th Oct	Fungi Walk, location TBC, 10-12pm
12 th Oct	Fungi Walk, Location TBC, 2:30-4:30pm
20 th Oct	Moth Morning, Copall Paddock, 9am
22 nd Dec	Moth Morning, Welsh Street, 9am

Winter Talks – Bishop's Castle Town Hall

Talks start at 7.30pm (doors 7pm)

7 th Oct	Woods for Wood Whites (Kaitlyn Elverson)
4 th Nov	Biochar (Dan Wrench)
2 nd Dec	Wintles Wood (Jill Key)
3 rd Feb	SALC Network (Janet Cobb)
3 rd Mar	Swifts (Edward Mayer)

*** Keep your eyes on our socials for other events coming up this autumn – Fungi walks, tree planting, meadow seed planting!**

✉ goingwild@lightfootenterprises.org

☎ Call Dan: 07493 702246

Online events calendar at bishopscastleandbeyond.co.uk/events-whatson/

For a constantly updated list of local events remember to visit Spotlight on Events on the Bishop's Castle and Beyond website. Offering a comprehensive list of what's happening in the area, local groups and events are also invited to upload their events for free.

**BISHOP'S CASTLE
& BEYOND**

*The guide to Bishops Castle
and surrounding areas*


ENTERPRISE
HOUSE



Bishops Castle and Beyond is a comprehensive guide to what's on and around Bishops Castle, Clun Valley, South West Shropshire and the Welsh Borders.

- **For local events and activities** visit 'Spotlight on Events' Calendar
- **Hosting an Event?** Get noticed by listing your event for **FREE**.
- **Own a business?** Attract more customers with a personalised business page, upload your photos and share your story.



www.bishopscastleandbeyond.co.uk**01588 638038**



Bishop's Castle
Town Hall

BISHOP'S CASTLE TOWN HALL

*If you are travelling always
phone 01588 630023
to check the exhibition is open
as occasionally we have
to close for weddings.*

3rd October - Welsh Border Wizardry & Shropshire Sorcery....

CONJURORS, CHARMERS AND THEIR CONFECTIONS...

An Illustrated Talk on their Craft and Confections

Doors open at 7.15pm for 7.30pm start

Tickets £10 available from the Town Hall or

online at www.ticketsource.co.uk/BCTH

4th October - Antiques & Flea Market 9am to 4pm.

1st Saturday of each month. Lift available. Free entry.

7th October Going Wild Talk

Details on the website www.bishopscastletownhall.co.uk

11th October Suthering in concert

Door open 7.30pm for 8.00pm start Limited Bar

Tickets £12 or £14 on the door from the Town Hall or online at

www.ticketsource.co.uk/BCTH

11th October until 11th November Val Littlehales Exhibition

14th October Bishop's Castle Heritage Resource Centre Talk

More details on website www.bishopscastletownhall.co.uk

Tickets £5

17th October BLAST Storytelling

Medea with Despina Ariou

Door open 7.30pm for 8.00pm start

Details at www.bishopscastletownhall.co.uk

Tickets from the Town Hall or online at www.ticketsource.co.uk/BCTH

18th October Farmer's Market

9am to 1pm

3rd Saturday of each month.

Stalls include Bishop's Castle Seed Bank, Cheese, Meat, Cakes & Pastries, Preserves, Honey, Chocolates, Hand Dyed Wool, Soaps and Body Creams. All produced locally. Lift available. Free entry.

20th to 30th October Great Book Sale + DVDs & CDs

A huge selection of good quality second-hand Books, DVDs & CDs. at bargain prices

- £2 a hardback, £1 a paperback and 4 for £1 for DVDs & CDs

31st October Willow Hill in concert

Recently named Rolling Stone's "Band to Watch", **Willow Hill**, has cemented themselves as one of Nashville's most unique sensations.

Door open 7.30pm for 8.00pm start Limited Bar

Tickets £12 or £14 on the door from the Town Hall or online at

www.ticketsource.co.uk/BCTH

1st November Antiques & Flea Market 9am to 4pm.

1st Saturday of each month. Lift available. Free entry.

4th November Going Wild Talk

Details on the website www.bishopscastletownhall.co.uk

8th November Jon Wilks in concert

Door open 7.30pm for 8.00pm start Limited Bar

Tickets £15 from the Town Hall or online at www.ticketsource.co.uk/BCTH

11th November Bishop's Castle Heritage Resource Centre Talk

More details on website www.bishopscastletownhall.co.uk

Tickets £5

15th November Farmer's Market

9am to 1pm

3rd Saturday of each month.

Stalls include Bishop's Castle Seed Bank, Cheese, Meat, Cakes & Pastries, Preserves, Honey, Chocolates, Hand Dyed Wool, Soaps and Body Creams. All produced locally. Lift available. Free entry.

21st November BLAST Storytelling

Waiting for Eldritch with Tom Juniper

Door open 7.30pm for 8.00pm start Details at www.bishopscastletownhall.co.uk

Tickets from the Town Hall or online at www.ticketsource.co.uk/BCTH

22nd November Pete Morton in concert

Door open 7.30pm for 8.00pm start Limited Bar

Tickets £15 from the Town Hall or online at www.ticketsource.co.uk/BCTH

29th November Christmas Craft Fair

Two floors of crafts from Jewellery to Textiles, perfect for finding that original Christmas gift.

Open 10am to 4pm - Free entry

www.bishopscastletownhall.co.uk

Bishop's Castle News

County Lines

Top issue for our Safer Neighbourhood Team (SNT)

The police's SNT unit is still listing as a priority the threat, harm and risk to the community of 'County Lines'. This network supplies drugs from urban areas into market towns like Bishop's Castle using dedicated mobile phone lines and exploiting vulnerable children and adults to traffic drugs and money. The SNT works with residents to identify vulnerable locations where drug dealers may try to set up a criminal enterprise and, when identified, works towards removing them.

Other key community issues are seen as Child Protection, Domestic Abuse and Acquisition Crimes – ranging from shop lifting to domestic burglary. If you want to contact the police the number to call is 101 if not urgent – and still 999 for emergencies.

Bishop's Castle Railway Society, The Old Weighbridge, Station Street.

Bishop's Castle Railway Society is open on the 2nd and 4th Tuesdays of each month, 11am-3pm. Come and see progress on the restoration of the LNWR box van and see how a mechanical weighbridge is operated. Also, there is a gift shop and second-hand railway books, model railway, and refreshments. A genuine artefact of the BCR, which hasn't been back in Shropshire in (very close to) living memory, is now on show.

Christian Aid – Gaza concert

on 14th September in St. John's Church, concert pianist Hugh Petter performed an inspiring piano recital, including works by Beethoven, Grieg, Chopin and some of Hugh's own compositions. Raising funds for the people of Gaza, about 60 people attended. Thanks go to brilliant Hugh and the amazing cake makers! Around £640 was raised.

Breast Cancer Now

On Sunday 17th August from 1 – 5 pm the fundraiser at Georgia's Snailhouse Stitching raised over £800 for Breast Cancer Now. Huge thanks to everyone who contributed.

Titty Trail

The Dining Divas, a Bishop's Castle Ladies' Social Dining Network, will be talking part in the Titty Trail, an 11 mile walk starting and finishing in B.C., on

October 12 to raise money for the Lingen Davies Cancer Treatment Centre in Shrewsbury. Please support this local cause by dropping by Snailhouse Stitching or visiting www.justgiving.com/team/Brenda-woolf-5. Thank you.

The Titty Trail is open for everyone, 11 miles, £30.00 entry fee.
<https://www.lingendavies.co.uk/news-events/events/tittytrailshropshire2025>.
See posters in town.

Bishop's Castle W.I.

Meets at 7.30 pm on the 3rd Tuesday of every month at The Methodist Hall, Station Street. All are welcome to join the outings and activities. Just come along for an evening of friendship. Thank you.

Co-op

The ground breaking for the new Co-op is expected imminently and for the new store to open in the first quarter of 2026.

CCTV

The Council has decided, in view of increasing crime and concerns about County Lines, that it will install CCTV cameras on the five entry points to Bishop's Castle – Kennel Bank junction, Brampton Road cross roads, Kerry Lane, Welsh Street and Montgomery Road. Quotes are being obtained for the next Council meeting on Tuesday 21st October. If anyone has any concerns or questions, please email the Clerk on townclerk@bishopscaletowncouncil.gov.uk and they will be discussed at the meeting.

Local Voices - Harvesting Memories

Do you, or does anyone in your family, have memories of this area spanning back over the decades? Do you have stories and photos of life here in the 1930s, 40s and 50s? If so, we'd love to hear them and ideally sound-record them.

A renewed project called 'Local Voices' is resuming the oral history research started by Janet Preshous and others with the support of BCHRC. We plan to visit or meet local elders to record their stories and learn more about life here in the past.

We look forward to hearing from you and to launching this exciting project. If you'd like to take part, please ring 01588 442008.

Bishop's Castle Business Park

There are now only two plots left on the Bishop's Castle Business Park – although some are only used for storage. Update in next issue.

The Case of the Missing Benches

In August the two new benches outside the Church vanished. It was on a Friday morning when some thieves had rammed the Business Park gates, then taking some outside equipment. There was no-one to ask and it was assumed that they had also 'nicked' the benches. There was outcry on Facebook – but happily it was found they had been taken away by Anthony Jones for wax weather proofing. They will be back soon all ready for winter. The 'Support our Beds' bench is on order and will hopefully be positioned near the bus shelter very soon.

Playground Fence

Tenders are out to repair/replace the fence around the Playing Field playground.

Defibrillator

There is now a defibrillator at the top of the town. It is located on the Wintles in the car park which you turn into just passed the new houses on the road going up to Castle Green from Welsh Street. Thanks go all who helped with this project.

White Lining and 20 MPH Zone

These have been promised and hopefully will be done in October. Dumped vehicles will be removed from The Shropshire Council owned 'Stars' carpark, under the arch.

Coffee Morning in aid of Dial-a-Ride

Abbeyfield House will be holding a coffee morning to raise funds for Bishop's Castle Dial a Ride on Thursday 20th November at 10.30 at the home on Oak Meadow.

The 'Dial a Ride' recently lost its small mini-bus following an accident that led to it being written off and are now urgently needed to purchase a replacement vehicle. Longer term plans also require funds to replace its now ageing larger wheelchair accessible vehicle so this gesture by the residents of Abbeyfield is much appreciated.

There will be coffee, chat, cake and biscuits as well as the opportunity to meet Dial-a-Ride drivers, volunteers and users to hear about the service and its future. A raffle and Christmas Bric-a-Brac will also be on offer.

Please try and pop along and support this vital local service from 10.30am on the 20th.

Dementia news

Dementia Information Packs are now available on request from Bishop's Castle Medical Practice, and the Chemist. These free packs contain useful contact numbers for dementia charities and for more local support, as well as some information that people living with dementia wished they'd known when the diagnosis was first made.

The **800 Club** (for carers of people living with dementia), continues to meet at 10.30am on the 1st Monday of the month at the Six Bells. (Entrance via the back door). Contact us for more information: bc800club@gmail.com
Sadly, the Age UK Dementia Support Group (which met monthly at the Grange Road Community Centre in Bishop's Castle) has had to close. Over the last few years, 10 couples have attended on and off, but now their circumstances have changed and they have moved on. The nearest group is at Pontesbury. **Email:** enquiries@ageukstw.org.uk **Telephone:** 01743 233 123

Bishop's Castle Civic Society Needs Your Help

The Civic Society is an independent voluntary organisation which seeks to improve and protect the heritage of the town and its open spaces. It organises an annual presentation of awards to private individuals and owners of business premises who, by their care for their buildings or gardens, make an outstanding contribution to the visual amenity of the town. We also hold occasional evening talks and visits to places of historic interest.

Our Secretary has recently stepped down due to family commitments after many years excellent service and we are seeking a replacement. The work is not onerous and support would be given to any volunteer.

If you feel you able to contribute to the Society, either as Secretary or as a Committee member, please contact me on: mdaweshafodwen@gmail.com
Michael Dawes, Chairman.

Christmas Lights

The Christmas Lights 'switch on' is planned for Saturday 6th December. Please see Bishop's Castle at Christmas on Facebook for more details nearer to the event. It follows the Christmas Craft Fair in the Church.

Public Hall/Bowling Green

Work continues on the sale of the Public Hall - currently with solicitors - and on the acquisition of the Civil Defence Bowling Green.

The Stars 'one year on'

It was finally opened in June 2024



Tenants moved into the affordable flats and the shop was now available for some kind of community use.

But what?

It was decided that a pop-up venue would hopefully tick many boxes!

A year ago on the 20th of September, our first shop-keepers stepped through the door – the Dog Shop! These lovely ladies had previously battled the cold and lack of facilities when they used the shop before construction work began so it gave the Trust huge pleasure to see them looking so fabulous in the newly refurbished shop space. Since then, they have returned many times, until recently, when they finally closed the door on the Dog Shop.

In its first year the Stars has successfully hosted art exhibitions, other charitable sales, local community groups spreading the word, a jewellery workshop, a vintage bicycle restorer, some beautiful bonsai trees and much more! The venue is proving extremely popular but let's some of the hirers speak for themselves

From Janet Gamble of the Dog Shop:

Our best pop-up events were in the Stars old shop, now renovated by the Bishop's Castle Community Land Trust. Being opposite the Co-op, we had an amazing footfall helped by the versatile, light and well-equipped space, which all added to our success.

From Elaine Latham and Nicholas Taylor, June 2025

The local interest was lovely and we learned a lot of life and the arts "scene" in that part of the world too.

The sole use was great as it felt like we were running our own gallery short term so could give time to visitors to talk about the work and get a variety of views and feedback which Nick found really valuable. The communication with the Trust and Enterprise House was consistently friendly and helpful.

We also had a successful show with sales exceeding our expectations. We will be re-booking next year with new work to show.

In September, we had a sale and shared a pop-up café with the SpArC charity for the Michaelmas Fair.

Our next BCCLT event will be on 19th of December for our Christmas and Birthday celebrations.

So please help us to celebrate our first year by making a donation, however small.

We'd like to raise £365 – a pound for every day!

**Bishops Castle & District Community Land Trust Project Account,
Sort code 40-30-30, Acc. No. 41296906**

Circle Dance in Bishop's Castle **Most Tuesdays 2.15–4pm**

These are simple community dances, mainly from Eastern Europe and various traditions. The dances are relaxing, fun and good way to keep fit in body and mind and make new friends. The steps are all taught and use haunting music. Call 01588 442008 for more details.

The Bishop's Castle Swift Group

The Bishop's Castle Swift Group is appealing for records of nesting swifts.

The swift survey this year hasn't been complete and we would like to know how many pairs of swift have nested in the town and which buildings they're in. We have a number of swift boxes available please contact Pete Carty (07824) 514564.

There are nearly 50 swift nest boxes in the town and half of these are being used. Swifts have declined in Britain partly because we are improving the insulation in our houses and in particularly sealing roofs where they used to nest. You can help the swifts by replacing lost sites with nest boxes. If you are doing some repair work to your roof please check to see if you have swifts nesting and if so try and do it after August or before May also if you're doing some repair work and you have scaffolding up this is an easy time to erect a swift nest box. These need to be higher up on a building with a long drop below them allowing the swifts to drop out and fly off.



Sam Edmiston
Garden Landscaping Services

Stone Work - Ponds & Water Features - Paving - Decking - Fencing -
Garden Structures - Raised Planters - Steps - Turfing

07484366154 edmiston813@gmail.com

Over 20 years experience & fully insured



Celebrating 3 Years Of Opening Our Clinic

Big thank you for all your support!

Call Vikki or book online for an appointment at our Bishop's Castle clinic.

Tel. **07779 976 648** www.marchesfootcare.co.uk



Vikki Robson
DipCFHP MPSPract



Qualified insured and a member of the Alliance of Private Sector Practitioners

Updates

Three Tuns Inn – Open Again

The Three Tuns Inn is back in operation with a new temporary tenant – Darren Dixon. The pub is currently open for ale and beer. Hopefully food will be available by the time this newsletter is issued.

Darren, who has been in the hospitality business for 14 years running wedding venues, event mobile bars and catering now runs a golf club and pub in Leominster. He lives in Ludlow. He is at the Tuns on a 'Tenancy at Will' basis while he waits for clarification regarding the funds that Heineken/Star Pubs have allocated to refurbish the pub – frontage, kitchen, living accommodation, 'top room' all need work - and reaching an agreement on 'terms'. When he has agreed a proper lease, he wants to bring The Tuns back to its former glory and sees it as a long term venture. He hopes to serve at least three local ales – part of the negotiations. The frontage of the pub will be made more presentable – but he awaits details from Heineken/Star Pubs before the major works required to bring it back to its former glory can be undertaken.

The Tuns has a long way to go but is a good step forward. It follows the continuing pressure from the people of Bishop's Castle and our MP, Stuart Anderson, all of which Darren admits were factors in its re-opening and in his being given the opportunity to run the Tuns .

Plans for another public meeting and to drum up publicity for the cause with demonstrations in London and The Hague are on hold for the time being.

A letter was written to Lawson Mountstevens, CEO of Star Pubs, and in his reply he stated 'I appreciate the genuine passion you and the community have for this site and I can assure you in the strongest terms that we do not take lightly the issue of sites being closed – no one wins when that is the case. As indicated in our previous email to you, a site of this nature requires a great deal of due diligence when it comes to investment but I am pleased to let you know that we have very recently internally agreed a very significant and ambitious investment – **but we do require the right operator to proceed with this and we are working hard to find them.**'

In the meantime we must do all we can give support to the Three Tuns Inn and to help Darren to make a success of his new venture.

Meet your safer neighbourhood team

We are a dedicated group of police officers and police community support officers (PCSOs) who work with local communities and partner organisations to keep our residents, businesses and visitors safe and to prevent crime and tackle anti-social behaviour in your locality.

Officers can be contacted on the below numbers concerning community issues. To report a crime in progress call 999 and for non emergencies, report online at www.westmercia.police.uk/report. If you are unable to report online, you can contact us via the 101 non-emergency number.

Bishops Castle and Rural Craven Arms

bccar.snt@westmercia.police.uk



Inspector
Damien Kelly



Sergeant
Jenni Price



PC
Stuart Coote
07814 051729



PCSO
Shaun Culliss
07811 752207



PCSO
Calvin Brown
07970 543854

Whilst the information is considered to be true and correct at the date of publication, changes in circumstances after the time of publication may impact on the accuracy of the information (April 2024).



**WEST MERCIA
POLICE**



Sign up to receive alerts from
your local policing teams
www.neighbourhoodmatters.co.uk



Kings Head welcomes new Publican

The King's Head, after a refurbishment programme, has reopened with Neil Sanders at the helm. The pub will continue to offer pool and darts facilities - and possibly dominoes - to cater for the town's sportsmen and women. It provides a base for Bishop's Castle's various sports clubs and teams . Sky Sport and TNT Sport are on tap to screen the best sporting fixtures.

Neil is an experienced publican and trained fire fighter.

Opening hours for the time being will be Tuesday - Thursday 3pm until 11pm and Friday to Sunday 11am until 12pm (Sunday 9.30). It will be closed on Mondays.

The pub will initially serve two local ales – currently Butty Bach and HPA – and a draught beer as well as lagers , ciders and the full range of wine, spirits no/low alcohol and soft drinks. Lines will be added if there is demand. Food, a traditional pub menu, will be served both in the downstairs restaurant, which can hold 28, and in the 20 seat upstairs dining room, which can be hired out. Tea and coffee will be available during opening hours. 'Take ways' will be available.

There will always be a corner for quiet chat and the roof bar/terrace will also be open when fine.

The three bedrooms have been upgraded to meet best standards and are now rentable as air BNBs - two doubles and one single.

We wish Neil and his team every success.

Update from Pugh's Butchers

As some of you may know, I put Pugh's Butchers up for sale earlier this year as I'm not getting any younger! But following the wonderful expressions of support we've received, I've had a change of heart and am delighted to confirm that Pugh's Butchers will be providing our usual full and friendly service this Christmas and for the foreseeable future.

We have turkeys from the trusted supplier we have used for the past 44 years; locally produced geese; plus turkey crowns and fresh ducks. If you want a change from poultry this year, we can provide all cuts of beef, lamb and mutton, again very locally produced. Our free range pork and chicken are from Packington, the quality is second to none in my opinion. We can also supply game - venison, pheasant, etc from local producers - just let us know what you want.

MARCHES CHOIR
and MARCHES SINFONIA
St NICOLAS CANTATA
Benjamin Britten



SATURDAY, 13th DECEMBER 2025
St John's Church, Bishop's Castle

In addition to meats, we have a wide range of cheeses, probably up to 40 different sorts! We're happy to put a cheeseboard together for you. We also supply pork and game pies in a range of sizes.

Finally, we have our own cured bacon and sausages, pigs in blankets, sausage meat and award-winning haggis. Together with whole milk direct from the farm, butter, and fresh fruit and veg, we have everything you need for your festive meal. Helen, Derek, Matthew and I pride ourselves on offering personal service and a warm welcome on the High Street, and we're looking forward to seeing you soon.

Andrew Pugh

BC Waste Water Treatment Works - an Update

A letter has been sent to the Secretary of State regarding the 'Levelling- up and Regeneration Act 2023 96D (2) (a)' which removes the responsibility of water companies to take remedial action in towns of under 2,000 residents. This provides Severn Trent with no incentive to prioritise the needs of Bishop's Castle and, possibly, an excuse not to take necessary action.

Under the above Act, the Secretary of State has discretionary powers to reduce the population threshold to under Bishop's Castle's population of 1,893 (2011 Census) – which anyway is presumably higher now with a 2024 estimate of 2063, based on ONS' 0.9% increase for Shropshire. We have therefore asked for consideration to be given for those powers to be exercised and to reduce the population threshold for Bishop's Castle. This would help us in our endeavour to put pressure on Severn Trent to enable us to build the much needed 80 new homes, particularly as when Severn Trent Water cancelled the proposed £8 million 'treated waste water' pipeline to the River Onny they stated that alternative methods of sewage treatment would be pursued. A reply has been promised by the end of October.

Town Hall Clock

Making the Town Hall clock chime correctly is a true art as it has two levers which are meant to hit the bell at the same time. One day in August the team was working hard to get the clock back into sync, resulting in many random chimes. Overheard on the Cobbles, a rather smart mother crossly said to her daughter, "That clock is ridiculous. How anyone can live here I don't know". "Mum" said sensible daughter, "You told me that Bishop's Castle was magic. The wonderful and strange chimes on that clock prove it. This town is magic."

SpArC Apple Pressing Day

Saturday 25th October 9.3am – 4pm Bank House BC. 60p per 75 ltrs. 80p per 1 ltr plus 50 per 75 ltrs for pasteurising. Bring own apples and screwtop bottles. To book a slot and for details contact - jeanshirley@btinternet.com

*We offer a wide range
of legal services
for both the individual
and business*



BISHOP'S CASTLE | T: 01694 723818
CHURCH STRETTON | T: 01694 723818
WELSHPOOL | T: 01743 248148
SHREWSBURY | T: 01743 248148
LUDLOW | T: 01584 878456
KNIGHTON | T: 01547 528332
TELFORD | T: 01952 403000

www.pcblaw.co.uk



STONE HOUSE,
BISHOPS CASTLE



Nestled in the heart of Bishop's Castle, Stone House offers residential accommodation for older people with or without dementia.

We can also offer respite beds when available

For more information contact
Keturah Bloor,
Telephone 01588 638487
E-mail kbloor@coveragecareservices.co.uk

Stone House, Union Street, Bishop's Castle, SY9 5AJ

Shropshire Army Cadets

Three new adult volunteers have applied – if you want to join them in BC for fun, friendship and adventure - contact 01743 231779 www.info.shropshire@rfca.org.uk. It is hoped to be able to start to recruit cadets in the Spring.

Friends of Bishops Castle Playing Fields

A big thank you to those who filled in the form on the back of the last newsletter and at the Carnival. We will have to close the consultation soon but if there is anyone still out there who would like to let us have their views, please can you leave comments on Facebook group **Friends of Bishops Castle Playing Fields (2025)** or by email to friendsofbcplayingfields@gmail.com . Your support is vital in our bid for funds for any improvements to the Playing Fields.

All ideas welcome. Some comments received so far : wooden fence for play area (repair things more quickly); keep the openness/views, no planting of large trees; outdoor gym (popular with adults and under 18s), basketball hoop, new 5-a-side goal posts, picnic benches; new skate park ramps; sound proof fencing around skate park and pump track; lighting - low level down lights and more of them, no light 12am – 4am; benches - refurbish old ones, additional seating with platform style benches; recycling bins; especially at skate park; more flowers, fruit trees, trees; fix the bins; wild food; Play area climbing wall useless; repair water fountain; deal with bullying in skate park; mini park run (under 12s), and 'information boards'. The consultation document asked -

- How often do you visit the Playing Fields?; What do you use the Playing fields for; walking ?/ dog walk / play area / skate park/ pump track / other
- What do like the best about the Playing Fields?
- Are there any changes/improvements you would like to see ?;
- Would you like more flowers, trees or fruit trees ?;
- Did you know the fruit trees are there to be picked by locals ?
- What new play/skate park equipment would you like ?;
- What improvements to the play area would you like ? ;
- What sort of fence should we put around the play area ?;
- Need to upgrade water and electricity supply to the parks, comments
- There are plans to install a soundproof fence around the skate park and pump track; comments-
- Litter bins, dog poo bins and lighting; comments
- The benches need upgrading/refurbishing; comments-
- The Old Bowling Green (off Kerry Lane) may be used in some way by BCTC; comments-
- Some of the paths need improving; comments.

KJ FITNESS

GROUP EXERCISE
& PILATES



BeatFit

Wednesdays 6.30-7.30pm



1 hour exercises to music, with dance fitness, hiit, toning and stretch.



Power Pilates

Fridays 9.15-10.15am

1hr class combining pilates exercises with traditional strengthening exercises such as squats, lunges, bicep curls. Extra resistance with dumbbells, balls and resistance bands will be used and provided.

Please note that my classes are designed with different levels of fitness and ability in mind, I deliver different options and modifications when required, no-one gets left behind!!

Venue – Church Barn, Bishops Castle,
SY9 5AF (parking available behind barn).



KJFitness



07932438386

Recycle 4 Charity

Your Ink Cartridges Could Help Us Raise Funds!



Collection boxes are in B.C. Town Hall
Money raised will go to
Macmillan Cancer Support



We are a friendly and reliable electrical firm based in Bishops Castle, covering Shropshire and Powys. We carry out work from simple lighting and power, to larger contracts and bespoke lighting installations. Please call or email for a no obligation estimate.

- Domestic, commercial, agricultural & industrial work undertaken.
- Qualified & OLEV registered for EV charge point installations for the domestic & workplace schemes.
- NIC approved inspector & installer of Domestic Ventilation.
- Experienced in fault finding & rectification.
- "Landlord checks"- Electrical Installation Condition Reports.



davetaylorlectrical@gmail.com | 07814 707 100

SpArC Swimming Pool



The last piece in the funding jigsaw for the SpArC pool project fell into place on September 10th. The project started with our £250,000 to replace the pool itself but needed another £680,000 to upgrade plant and equipment. Although Shropshire has severe revenue funding problems, capital funding is slightly more accessible. The total amount was agreed by a Shropshire Council Cabinet meeting in early September. Our contribution was persuasive.

This means that, given £2.7 million Government funding to reduce both the costs and environmental impact of heating the Centre, it has attracted £3.6 million funding in total. All this work cannot be done without major upheaval, but I'm afraid we still do not know its starting date.

Jean Shirley

Note : It is hoped work will start in the first quarter of next year once a new electrical substation has been built.

Refurbishment of Bishop's Castle Arts and Leisure Centre approved

A programme of essential repairs and improvements to Bishop's Castle Arts and Leisure Centre (also known as SpArC) has been given the go-ahead after Shropshire Council's Cabinet agreed on Wednesday (10 September 2025) to allocate money from the Community Infrastructure Levy (CIL) to help make it happen.



Digital Help & Advice @ Enterprise House

 **Get Online Week**
a campaign by  Good Things

Do you need help with your digital devices?

We are on hand to answer your questions
and provide practical help and guidance

Come along to our **FREE**
Monthly Digital Help Hub
3rd THURSDAY of the month
2.00pm - 3.00pm

Get Online Week
Digital Drop In
Monday 20th October
2.00pm - 3.00pm

FREE Friendly Drop In Sessions. Everyone Welcome

FREE Support brought to you by Rural Lifeline C.I.C. at Enterprise House in conjunction
with Bishop's Castle Town Council & Shropshire Council



VILLAGE
OUTREACH
EQUIPMENT HIRE

Village Outreach Equipment Hire

For Outdoor & Indoor Events



ENTERPRISE
HOUSE



- **Marquees & Gazebos**
- **Tables & Chairs**
- **Lighting, Staging & Sound Systems**
- **Soft Play**
- **Giant Games**
- **Display Equipment**
- **PAT Testing Service**



01588 638 038

villageoutreach@bishopscastle.co.uk

The refurbishment includes two major projects: a decarbonisation initiative and a pool refurbishment. The decarbonisation project will replace the aging and expensive to run oil-fired boiler with an all-electric heating system, significantly reducing carbon emissions by 70% and lowering running costs. The pool refurbishment will address essential repairs to the building's roof and the installation of easy access steps, making the facility more accessible, especially for older people, families with babies and toddlers and people with mobility issues.

The cost of these two important improvements is expected to cost just under £4 million, with funding coming from many different sources including:

- £2.454 million from the Public Sector Decarbonisation Scheme.
- £680,000 from the Community Infrastructure Levy (CIL).
- £505,000 from the Council's capital repairs budget.
- £250,000 donated by the Trustees of the Bishop's Castle Save the SpArC charity.

Councillor James Owen, Shropshire Council's Cabinet member with responsibility for leisure, said:

“This refurbishment is a significant investment in our community. It will not only enhance the facilities at SpArC but as more people use the centre it also will ensure its sustainability for future generations.

SpArC has the benefit of being very well supported by its local community. There is an active group of Trustees who raise significant funds to provide enhancements to the SpArC site. They have already raised and invested over £250,000 including the provision of fitness equipment, a cafe, pocket park and donations towards the theatre and arts. A further £250,000 has now also been raised to put towards improvements to the pool.

Councillor Ruth Houghton, Shropshire Councillor for Bishop's Castle, said:

“This is wonderful news for Bishop's Castle and South-West Shropshire. It means that local primary schools can teach pupils to swim, as is required in the national curriculum, without having to travel too far.

“I would like to thank the local community, including individuals, community groups, local businesses and town and parish councils, for all their support. It has been generous and unwavering during the fundraising campaign. This is a huge achievement of which everyone should be very proud .”



ENTERPRISE HOUSE

Your Local Business & Community Support Centre

PRINTING - SCANNING - COPYING - LAMINATING



DESIGNING - STATIONERY - BINDING - FINISHING

Printing, Copying & Scanning

Poster & Leaflet Design

Stationery Shop

Co-Working & Meeting Rooms

IT Support & Advice

Computer, Tablet & Mobile

Community Information

Enterprise Initiative

Business & Community Group Support

Village Outreach Equipment Hire

Serviced Offices & Workshops

Library

Open 9am - 5pm on Mon, Tues, Thurs, Fri

01588 638 038

www.enterprisehouse.org.uk

info@enterprisehouse.org.uk

www.enterprisehouse.org.uk

Road Closures:

Unnamed Road between Colebatch & Cefn Einion

Start/end Date: 7th October 2025

B4385 between Bishops Castle & Pentre

Start/end Date: 23rd October 2025

Unnamed road between Lydbury North & Stank Lane

Start/end Date: 10th November 2025

A489 Horderley

Start Date: 10th November **End Date:** 5th December 2025

to enable removal of diseased ash trees. The road will be reopened at weekends

Burning Autumn Garden Waste.

This is the time of year when people are clearing leaves from gardens and plots.

A regular practice is burning leaves and small twigs.

Before doing this please consider the following:

- 1) Smoke drifting over the neighbours, possibly their washing on a nice day.
- 2) People's health. Some may have breathing issues like asthma.
- 3) Thick smoke drifting across roads could result in your being fined.
- 4) Last but by no means least the effect on the climate. BC is a leading light in working to improve air quality.

Perhaps as a town we should even consider guidance for or limiting bonfires.

Please check the helpful link at Gov.uk. www.gov.uk/garden-bonfires-rules.

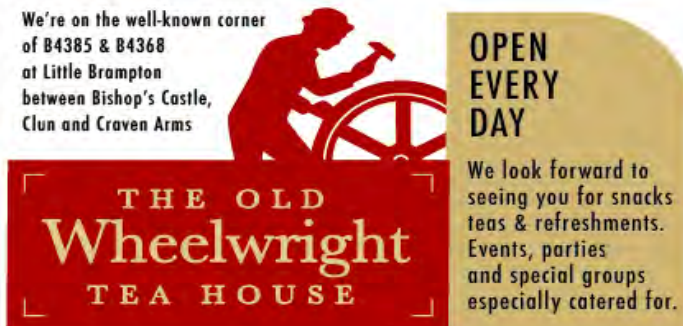
Alternatives for disposal are difficult to find. Local climate groups and the Town Council are researching ways to help, such as Biochar.

On the 4th November there is a presentation on Biochars at the Town Hall.

Also, there is an interesting video here: youtube.com/watch?v=SXgBDVv4sqE.

Current alternatives are composting or taking your waste to a recycling centre.

Cllr Leon Kosciuczyk



We're on the well-known corner of B4385 & B4368 at Little Brompton between Bishop's Castle, Clun and Craven Arms

THE OLD Wheelwright TEA HOUSE

OPEN EVERY DAY

We look forward to seeing you for snacks teas & refreshments. Events, parties and special groups especially catered for.



1st Thursday of every month

Board Game Night

from 7pm @ the 6 Bells

Bring your favourite game or choose from a selection

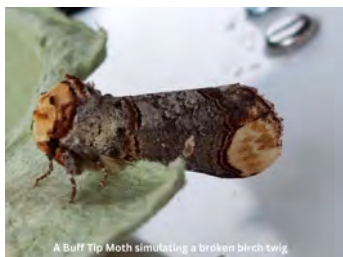
Contact Dave for more info: davekieros@gmail.com



This Autumn is full of opportunities to connect with nature and to support local wildlife. Here are a few highlights and tips from the *Going Wild in Bishop's Castle* team.

Listen for Tawny Owls

From dusk onwards, keep your ears open — tawny owl males are already calling to establish their breeding territories. Their classic duet — “toowhitt-toowhoo” — is actually a conversation between the female (toowhitt) and the male (twoohoo). Tawny owls mate for life, and autumn evenings are the start of their winter courtship.



Share the Harvest

Got spare apples?

Take them to a local pressing day or pop some in a basket at your gate to share with neighbours (and wildlife!).

Autumn Wildlife Tips

- **Leave the leaves:** A pile in the corner of your garden makes a cosy shelter for hedgehogs, frogs, and insects.
- **Plant for spring:** Autumn is the perfect time to plant bulbs and young trees, giving them a head start for next year's nectar and blossom.
- **Sow wildflower seeds:** Yellow rattle, red campion, oxeye daisy, and field scabious can all be scattered now — the winter frosts will help them germinate naturally.

Nature Note – September is Spider Month

Large house spiders are most visible now as males wander in search of females. Don't worry — they're not after you! Look closely and you'll spot the males' 'boxing glove' palps, which they use in courtship.

Watch the Skies

Swallows and house martins are gathering on wires, preparing for their long journey to Africa.

Myth-buster: Swifts don't roost over winter in trees or buildings. Once they leave in August, they spend months on the wing — even sleeping while flying!

Enterprise House News

Digital skills support at Enterprise House

Do you or anyone you know need help and advice with their phone, tablet or laptop? Come along to Enterprise House on the third Thursday of the month at 2pm for our monthly Digital Help Hub sessions. These FREE informal drop-in sessions are open for all. Pop in and see us for a chat about online safety or bring your device and any questions you have and our staff and volunteers will be on hand to help.

There are still a few places left on our FREE (subject to meeting the criteria) one-to-one digital skills sessions. If you know anyone who is struggling to access information online, or who needs tips and practical advice on how to use their tablet, phone or computer safely please encourage them to come along to Enterprise House.

Fortnightly Shropshire Local Drop In at Enterprise House

Following the success of Shropshire Local sessions, we are delighted to be hosting regular drop-ins on the first and third Thursday of the month between 10am and 4pm. Come along if you have any questions you'd like to ask or need advice and support with blue badge applications, council tax queries, highways or any other council services. You don't need to make an appointment, just call in and see how they can help.

Did you know that you can hire the library space?

The library in Enterprise House is available to hire on Monday afternoons, Wednesdays and Thursdays. If you have a local community or special interest group wanting to get together or are just looking for a different kind of meeting space for your business, please give us a call on 01588 638 038 or email info@enterprisehouse.org.uk to find out more.

Needleworkers at Enterprise House

Do you enjoy knitting, crochet, sewing or cross-stitch? Bishop's Castle Needleworkers is a friendly, welcoming group where you can bring along your own creation, share tips, and enjoy some relaxed company while you stitch. They meet at Enterprise House on the **second and fourth Thursday of the month between 2pm & 4pm**. Each session is just £3, which includes a hot drink.



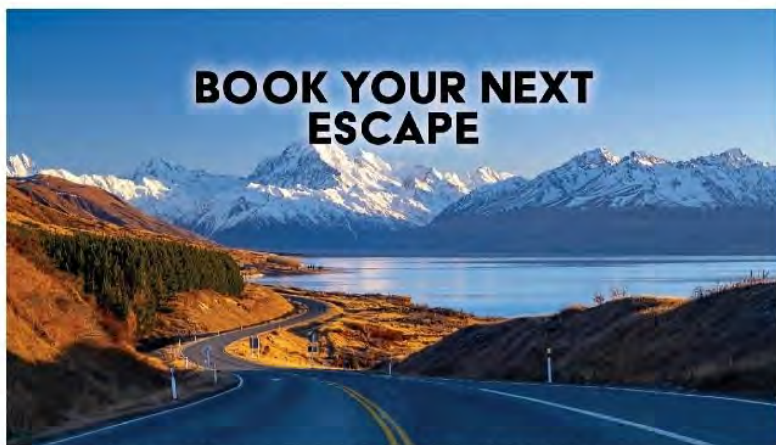


I design and build using sustainable materials to the latest low energy standards. Specialising in beautiful home extensions I take you through planning then build with the help of great local builders.

Mark Arbon,
01547529383 07796446275
Website www.markarbon.com

DROVERS TRAVEL

30 Church Street, Bishop's Castle



**BOOK YOUR NEXT
ESCAPE**

Full Financial Protection as accredited body member of Global Travel Group

Tel 01588 630333 email agent@droverstravel.com

www.droverstravel.com

Activities in The Church Barn

Mondays - Fit for Life 1.30-2.30 pm during term times. Seated and standing exercises to promote strength, balance and mobility for anyone 60+ years. Lots of fun! Contact Sophie Hamar on 07962 103 005 or sophiehamar@hotmail.com if you are interested.

Swing Band 5.30 – 7.00pm. Contact Vanessa Campbell 01588 638 978; John Franklin 01588 630314 franklinsbc@aol.com; chrissymondson@gmail.com

Tuesdays - Food Bank - 10.30-12pm ; Thursday 2.30 – 4.00pm every week. We offer free tea, coffee and biscuits and a welcoming atmosphere so if you need us please use us. Contact Andy Stelman 07773 006 413; Mandy Bryce 07855 340746.

Corndon Aikido Club - Tuesday 7.30 – 9.30pm and Thursday 7.00 – 9.00pm. Contact Edd Sacre 01938 561365 eddsacre@gmail.com

Wednesdays – Tai Chi 14:00-15:00, for beginners over 18. To book your for more information, please email: chigung@whiteoak-aikido.org or phone: 07880 501302.

Drama 3.45 – 4.45pm for school age children.
Contact Ian Reade 07596 087332 redkitedrama@gmail.com

Mothers Union 1.30-2.30pm third Wednesday of the month.
Contact Jenny Plunkett 01588 630018 or Meg 01588 638250.

Beatfit with KJ Fitness 6.30-7.30 pm.
Contact Kathy Jo - kjobarnes@icloud.com

Thursdays - Men's Group 10.00am – 12 noon third Thursday every month. Contact Mike Plunkett 01588 630018; 07968 109626.

Food Bank 2.30 – 4.00pm as above.

Corndon Aikido Club 7.30 – 9.30pm as above.

Fridays - Power Pilates with KJ Fitness 9.15 - 10.15am.
Contact Kathy Jo - kjobarnes@icloud.com

Many other groups, societies and families use the Barn for celebrations and events. **For details contact Neil Fox 07359 513243 or** bookingschurchbarn@outlook.com

Need help accessing council services?

Shropshire Local

are coming to Bishop's Castle
Find us in Enterprise House

Open to all

**Come and meet friendly council staff
face to face and get support with:**

- **Benefits**
- **Blue Badge Applications**
- **Concessionary Travel**
- **Council Tax Support**
- **HomePoint**
- **Highways**
- **Waste & more**



Dates

***First & Third
Thursday
of the month
10am - 4pm***



**ENTERPRISE
HOUSE**

info@enterprisehouse.org.uk

01588 638 038

www.enterprisehouse.org.uk

TONY PORTON
CAVELL HEATING
Heating & Plumbing Services

Services/Repairs/Installations
Oil boilers, Bathrooms, Plumbing
Weekend and Evening call outs
07773 413582//07790 037395
Friendly, Local, Reliable



Carpet and Upholstery Cleaning Specialist

IAN JONES
Telephone: 01686 639 591
Mobile: 07831 332226
Email: clearlythecleanestian@gmail.com

2, Cae Melyn,
Tregynan,
Newtown,
Montgomeryshire,
SY16 3EF

Touch, Smell and Feel the difference.

Bishop's Castle Shadows

Thanks to everyone who has shared their spooky stories – we still want to hear more! **Bishop's Castle Shadows** will tell visitors about the spooky side of Bishop's Castle. Your anonymity and address will always be respected. If you have a strange story or a spooky encounter that you would like to share and see in print, please, with a brief outline and your contact details, email BishopsCastleShadows@gmail.com and we will be in touch.

SpArC
THEATRE

Thurs 2nd October	7.30pm
Sunday 5th October	2.00pm
Thurs 9th October	7.00pm
Sat 11th October	2.00pm
Thurs 16th October	7.00pm
Sat 18th October	7.30pm
Tues 21st October	2.00 pm
Thurs 23rd October	7.00pm
Thurs 30th October	10.30am

Frid 31st October 1.00pm

Live Theatre: *Gobbers*
Royal Opera & Ballet: *Tosca*
Film: *The Marching Band*
Film: *How to Train your Dragon*
Film: *The Ballad of Wallis Island*
Live Comedy: *Box of Frogs*
Afternoon Film: *Penguin Lessons*
NT Live: *Mrs Warren's Profession*
Halloween Themed Film and Crafty Workshop

D&D -

Create and Paint your Own Hero

Visit the website to see full details of the programme and to book tickets

Tel: 01588 638038

Graham Dudley - Funeral Services

Local family-run funeral directors covering
the Clun Valley and all areas of Shropshire

Over 30 Years' Experience

Traditional and Eco-friendly funerals arranged

Mercedes Hearse and Limos available

Day/Night Service

Pre-paid Funeral Plans - Estimates on request

Monumental Masonry Agent



1, Hurst View, Powells Lane, Clun Tel. 01588 640852 Mob. 07780948670 email: dudleys2@aol.com

"A small, caring funeral service"

Patient Group News

Bishop's Castle Surgery

Covid and Flu Clinic

A Covid and Flu vaccination clinic will be held in the Sports Hall at the Sport and Recreation Centre (SpArC) behind the Community College, Bishop's Castle on Saturday 4th October. Covid vaccine is available for the over 75s and the flu vaccine is available for the over 65s. Patients will be contacted to arrange an appointment if they are eligible for one or both of the vaccinations. Patients Group volunteers will be outside to help with directions and parking.

Surgery Team

We have new Health Care Assistant, Nicky Banks, who is settling in well to the practice.

Community Hospital

The Community Hospital is doing well with support from our GPs. The hospital continues to use agency staff so more permanent staff are still needed. Accommodation for permanent staff is difficult to find in the local area and this is discouraging some new recruits.

Open doors policy

From the beginning of October the doors to the surgery will no longer be locked at lunchtime and will be unlocked from 8.00 to 6.30. Patients will no longer need to wait outside if they are early for an appointment.

Healthy Life

SpArC has recently launched the Healthy Life project, replacing GP referrals with a broader offer.

Who is it for?

- Anyone with a condition, including diabetes type 2, which needs an element of support from a Healthy Life Trainer to get them back into the fitness that comes through exercise.
- Those on the verge of a medical condition/needing a lifestyle change
- People with chronic knee/hip/back pain, needing a specific, gentle form of exercise
- Those with muscular skeletal problems who want to work out in the water

How to take part: either ask your surgery for a referral form or get one from SpArC reception and ask for it to be signed by a health care professional at your surgery.

What does it include? After an initial consultation with the Healthy Life Coach (Amanda Arnold), a three-month Centre membership plus, on Mondays, a gym programme tailored for you and/or Aqua Zumba and/or a gentle circuits class.

And the cost? A three-month referral membership costs £60. This entitles you to all the Centre's facilities including the Monday Healthy Life offer, but **you must be referred by a Health Care Professional.**

PALS Manager, Mount McKinley, Shrewsbury Business Park, Anchorage Avenue, SY2 6FG. Tel: 01743 277689; Freephone: 0800 032 1107 or email: shropcom.customerservices@nhs.net.

Bishop's Castle Heritage Resource Centre

Over the August Bank Holiday weekend and the following week Bishop's Castle Heritage Resource Centre held an exhibition at the Stars shop, showcasing their recent research projects.

More than 280 people visited during the week to see the timeline display that was produced for the 2023 Elizabeth I Charter celebration, with a centrepiece of a facsimile of the actual Charter. More recent research on display consisted of three panels looking at the local history of drovers, commissioned by the Bishop's Castle Walking Festival as part of their 25th anniversary celebrations in May of this year. A highlight was a panel with stories about drovers living in Bishop's Castle with details of being brought up before the magistrates for a variety of misdemeanours!

Ongoing research was represented by the four Garnett-Botfield estate sales from the early 20th century, where one of our volunteers is hoping to find out more about the tenants and who purchased the properties. Two newspaper cuttings that were brought in listing the lot sales showed that many tenants were able to purchase their farms in an important transfer of property from a wealthy family to local people. Other really useful documents brought in included a newspaper cutting about two photographs of the Garnett-Botfield family and their tenants at The Hut (now The Pines) at a celebration by the family in 1912. Also brought



AHEAD FOR TREES

Local, Professional Tree Surgeon
Est. over 20 years


Fully insured • Fully qualified
Wood chipping and 50ft cherry picker

- Hedge reduction
- Pruning
- Removal
- Ash dieback

Free Quotations
Sanford Hankin
07989 231 383
sanfordhankin@gmail.com

Snailhouse Stitching

All sewing, repairs
and alterations

DRY CLEANING 

Haberdashery

Bespoke curtains, blinds,
soft furninshings

www.snailhousestitching.co.uk
07792 88 99 34

19 High Street, Bishop's Castle
Mon-Fri, 12-5pm • Sat, 10am-4pm



Short & long distance
Airport transfers
Local tours

07 482 427219

South Shropshire Cars

in was a copy of the 1915 sales catalogue. This catalogue has enabled us to identify which properties were put up for sale in 1915, as well as telling us the names of the then tenants. This research is continuing and we would love to see any more photographs or documents about this that anyone would be willing to share. The Heritage Resource Centre is normally open on Thursdays from 10.30am to 1pm and the same time on the first and third Saturdays of the month, and on the fifth Saturday when that falls.



Thanks to Bishop's Castle Community Land Trust and to all the BCHRC volunteers who made the exhibition possible.

**Bishop's Castle Heritage Resource Centre, Chapel Yard,
Bishop's Castle. 01588 630556**

The White Grit Meadows Appeal

A call to help preserve a hidden gem at the foot of Corndon hill.

Wildflower meadows are one the rarest habitats in the UK. A local community land trust has been offered a rare and exciting opportunity to buy five acres of botanically rich meadow just over the Welsh border, at White Grit, within view of the mighty Corndon Hill. "It's a fantastic site", exclaims the Chair of Middle Marches Community Land Trust, Dr. Richard Keymer. "Across the UK, 97% of these meadows have been lost since the 1930's. We have launched an appeal for £45,000 to ensure these small fields at White Grit will be there for future generations to enjoy".

Large billowing hedgerows enclose the meadows. On a summer's day there is a timeless feel to them as you wander from one room-like space to another, and it is all alive with bees, hoverflies and butterflies amongst the flowers. The site has been looked after by the present owners for 23 years, but they now need to relinquish their ownership, and have kindly offered the meadows to the trust to purchase.

The White Grit Meadows Appeal was launched on Saturday 30 August. To give money to the appeal, people can go to <https://middlemarchescommunitylandtrust.org.uk/white-grit-meadows-appeal>. Alternatively, donations can be sent by post, to the Middle Marches Community Land Trust, c/o Enterprise House, Bishops Castle SY9 5AQ. Please make cheques out to 'Middle Marches Community Land Trust'. For further information please contact us via email: info@middlemarchescommunitylandtrust.org.uk



Clun Valley Quaker Meeting



EVERYONE WELCOME



SUNDAY MEETINGS FOR WORSHIP
OCTOBER ~ NOVEMBER 2025
10.30~11.30am FOLLOWED BY REFRESHMENTS

5TH OCTOBER at

Haslehurst Community Centre, Haslehurst Close,
Clun, SY7 8LQ

12th OCTOBER, 19th OCTOBER & 26th OCTOBER at

Grange Road Community Centre, Grange Road,
Bishop's Castle SY9 5AP

2nd NOVEMBER at

Haslehurst Community Centre, Haslehurst Close,
Clun, SY7 8LQ

9th NOVEMBER, 16th, 23rd & 30th NOVEMBER at

Grange Road Community Centre, Grange Road,
Bishop's Castle SY9 5AP

**BOTH VENUES ACCESSIBLE TO WHEELCHAIR-USERS, INCLUDING TOILETS
AND CAR-PARKING SPACE.**



FOR MORE DETAILS PLEASE PHONE

01588 630719 or 07816 910315



News from St John's Church

Many thanks to those who took part and sponsored the Ride and Stride event (cycled, walked, drove, rode a horse) on 13th September in aid of St. John's Church and Shropshire Historic Churches Trust.

Thanks also to all those who supported the Michaelmas Teas and Produce and Craft stalls in the Church as part of the Michaelmas Fair.

Dates for your Diary

Coffee and Companionship. 1st and 3rd Wednesdays 10.15am to noon, in Church. All welcome.

Friday Youth Hub drop in - after school term-time (for Secondary age young people). For more information, contact Rev Nick Gurney, Nick.Gurney@hereford.anglican.org

Sunday 26th October Bishop's Castle Orchestra Concert at 3pm. The Orchestra will be performing pieces from Giles Farnaby, James Hook, William Boyce, Handel, Haydn and Mozart as first played in the Vauxhall Gardens tea parties. Donations in aid of church renovations.

Sunday 2nd November 5pm All Souls Service. A time to give thanks for the lives of those who have died, particularly within the past year, and to light a candle in their memory.

Remembrance Sunday 9th November 10.45 am

Save the date! Saturday 6th December Christmas Craft Fair in Church. Contact Kathy Taylor if you want to have a stall.
email: cw.stjohnbc@gmail.com

Regular Services

11am every Sunday.

9.30 to 10am 1st and 3rd Wednesdays – Silent Prayer in the Lady Chapel.

Church Clock Dial Renovation - The new six-foot diameter clock dial - renowned for its single 'hand' – has now been put back in place on the North-facing side of the Church tower. The clock has been refurbished, cleaned and the new dial is painted in bright blue with its original white outer rim. Thanks go to everyone involved, especially

Catherine Jones Art workshops **A year of textile & art workshops**

Stars Community

Shop,

Bishop's Castle SY9

Priest Weston Village

Hall SY15 6DF

Hyssington &

Montgomery

- 5AE** 8 June make an artists miniature book (free, in conjunction with Monty Lit fest) (M)
15 June watercolours- the basics (PW)
21 June colour-mixing part 2 primary light & other stories (H)
12 July have a go at chalk pastels (PW)
17 July make memory sticks (BC)
2 Aug Magic with limited palette & carbon paper (PW)
8 Aug a whistle stop guide to gelli printing (M)
11 Aug introduction to paint pouring (M)
13 Aug experiment with monoprinting (M)
13 Sept Have a go drawing with pen & ink (PW)
Lots more workshops up until middle of December

Suitable for all, whether you're an experienced art & craftsperson or a complete beginner

Young people are welcome, but under 14s should be accompanied by a participating adult

Basic materials provided, (but please read blurb on Eventbrite & bring your own to make your work personal & individual)

Prices between £25-40 depending on the activity

For more information & to book:

www.eventbrite.co.uk.catherinejones

catherinejjartist@gmail.com 07407260949

www.catherinejonesart.co.uk

Martin Howitt and to those who gave grants. The old clock face has gone to the Six Bells where it will be proudly displayed.

Church Opening Times - St. John the Baptist Church is open daily for visitors, quiet reflection and prayer. There are Bibles in the prayer chapel, a peaceful space, for visitors to read. The church is open daily between 10am and 3pm - although sometimes earlier and later (depending upon who is opening and closing). We look forward to welcoming you. Kathy Taylor, Churchwarden.

Church Organ - The organ has now been reassembled and reinstated. The 'parts' were taken away for stripping down and for a complete renovation. The air supply system, including bellows and wind chamber, was replaced. The restoration has improved sound quality and will enable the organ to be used for many years to come. Thanks go to all concerned and to Shropshire Historic Churches Trust who helped fund the late, unexpected work.

War Memorial – Work on the War Memorial will start in early/mid October, the objective being that repairs will be made in good time for Remembrance Sunday. Thanks are due to the many people who have given their support and for their patience and forbearance. It has been a longer than expected journey – but really worthwhile.

The Third Place

St. John's Church Restoration Project

As you may have heard, a move is under way to restore and revitalise St John the Baptist's Church, Bishop's Castle, as a facility for everyone in the town. The plan is that the chancel (the bit at the end with the altar) will be reserved for church services and the rest of the building will be for the use of the whole community – for youth groups, concerts, weddings, meetings, and many other such activities, including many activities that previously took place in the Public Hall. (For big occasions such as some funerals and weddings and at Christmas and Easter, church services can still expand to fill the whole building). There has already been a wide community consultation about what is needed and there are more consultations to follow.

The church is the oldest, the largest and one of the most important buildings in the town and if something isn't done soon it is going to fall further into decay. The roof needs doing, plaster is coming off the walls and in winter it is freezing. It needs a general make-over with proper, environmentally sound heating, an improved floor and larger catering and

Autumn Print workshops with Catherine Jones

at Border Lights Gallery
High Street Bishop's Castle

10am-12.30 pm

Lino Printing

for beginners and improvers

Simple lino printing (single sessions),

4 weeks to learn multi colour printing and reduction
printing & work on larger lino

4 weeks £130

single sessions £35

Thursdays: 11, 18, 25 Sept, 2 Oct

Mono & tetrapak printing

for beginners and improvers

3 weeks monoprinting (a different technique each
session)

3 weeks tetrapak printing (introduction
& ways to develop technique)

6 weeks £170

single sessions £35

Wednesdays: 5, 12, 19, 26 Nov 3, 10 Dec

To book and for more information

<https://www.eventbrite.co.uk/o/catherine-jones-10959560639>

price excludes booking fee

tel 07407260949

www.catherinejonesart.co.uk

NORMAN JONES

BISHOP'S CASTLE

Domestic Appliance Repairs

Same Day/Next Day Service

Repairs ..PETE.. 07971 252069

Sales .. Norman .. 07816 875233

Home 01588 638677



Eliza Glapinska

MA Contemporary Crafts, BA (Hons) Fine Arts

+44 (0)7813 795910

eliza@arterachel.co.uk

www.arterachel.co.uk

Master Dressmaker

Heavy Tailoring Specialist

IG arterachel23

FB Arte Rachel

LI Eliza Glapinska

MB GRASSCUTTING

REGULAR LAWN CUTS,

GARDEN TIDY UPS

Friendly, reliable and professional service.

No job too small! Locally based

please call Mark for free quote on 07388 676775 or

email mbgrasscutting@gmail.com

HORAKOVA
HARTWELL

— HANDBOARD —
— ELLIOTT —

Safe, confidential counselling psychotherapy for adults
over the age of 18

Located in Lydbury North

Tel: 0781 8062017

email: rose@handcounselling.com

www.handcounselling.com

toilet facilities -and that's just for starters. Above all, it needs to be used by and to have a use for the whole community.

Restoration and rebirth of the church as a community resource will be wonderful but it won't be cheap. You may think that the Church of England has lots of money and should pay for the restoration itself, but it hasn't. True, it has vast assets on paper, but those assets include the notional value of all its churches and graveyards – including our own St. John's – which, except for a few cathedrals, bring in no money at all. If the wider community supports the project, we will have an opportunity to save the building otherwise it will not be there for future generations. It is far beyond the capacity of the present congregation to maintain the building, let alone restore it.

We are applying for lottery money to make up the shortfall and we have just completed our 'expression of interest' to get started. If it is successful we will move to securing money for the development stage – for architect's plans and for costing for the building work – then comes the final stage of applying for the delivery stage funding and if that's successful then the project will happen.

We are aiming for something beautiful and spectacular. The benefits for the town will be huge if we can pull it off. Not just enhanced use of the building for everyone, but also a tourist attraction telling the story of the church, the town and the surrounding countryside. This will bring footfall and money to help local businesses.

If you have any ideas, skills or experience, there will be lots of opportunities for suggestions and criticism as the project progresses. In the meantime – we will keep you posted.



~ Serenity ~
Sports & Holistic
Massage Therapies

www.serenityholisticmassage therapies.co.uk

Jenny Hudson
Sports & Holistic
Massage Therapist

07968087981
01588630717

Specialising in Pain
Relief, Anxiety and
Stress Management

NICKI BOWEN
DOMESTIC AND ANIMAL HELP

- HOUSE WORK
- HOUSE AND PET SITTING
- DOG WALKING AND HORSE CARE
- FRIENDLY AND RELIABLE SERVICE

Telephone: 07527 777536
email: nb7541@googlemail.com

LOCAL DIRECTORY
BISHOP'S CASTLE
& BEYOND 2026

USEFUL TELEPHONE NUMBERS

COMMUNITY INFORMATION

BUSINESS PAGES

To find out about listing in the 2026 edition
contact Enterprise House on 01588 638 038



Bishop's Castle and Brockton Methodist Chapels

Sunday Services:

Bishops Castle:

19th Oct – 10.30am – Rev Brian Spencer- Holy Communion Service

23rd Nov – 10.30am – Rev Sheila McNally

Brockton:

5th Oct– 3.30pm Messy Church – Rev George Heinz

12th Oct – 5pm – Rev Denise Hargreaves

26th Oct – 5pm – Rev Sheila McNally

2nd Nov – 4pm – Rev George Heinz

9th Nov – 3.30pm Messy Church – Rev George Heinz

16th Nov – 4pm – Rev Sheila McNally

30th Nov – 4pm – Rev George Heinz - Holy Communion Service

Refreshments served after all services.

Regular Weekday activities at Bishop's Castle Methodist Hall:

Tuesdays during Term time:

Tuesday Social

Open to all- with or without toddlers:
1pm – 2.30pm.

Rainbow Gang

Children's Club, with crafts, games and
Bible story for 5 to 11 year olds - 5.30pm - 6.45pm.

Fridays:

Coffee morning - all welcome 10.30am –12 noon.

For more information please contact:

Elisabeth & Michael Knight: chapel.house@uwclub.net or

Heather Holt 01588 630055.

Minister: Rev. George Heinz 07538 480626

**The Methodist Hall in Station Street is available to hire,
contact: Pat Morrison p.morrison.2008@btinternet.com**

Community Heat Network

As you may have heard, the Community Heat & Wind Network project received planning permission in June for a 900kW turbine to be installed at the site west of the Conery just off the B4385 to Lydbury North. Many thanks to all who helped us get the planning permission, including Councillor Ruth Houghton and the BC Town Council. Planning rules mean we now have 3 years to begin the installation work.

The turbine should produce around 2,200 MWh of electricity per year (this is the typical electricity use of 700 homes), and over its 30-yr life will be a very cost-effective source of electricity generation. It will be called the 'Twist' turbine in memory of Dennis Twist and his long involvement with environmental activities in Bishop's Castle and Clun.

That's the good news. However, recent developments in politics, energy markets, and local user needs have impacted the economics of the other half of the project: the Heat Network, which is the piped-heat-delivery system. These include:-

- Oil price stagnation, putting a cap on the price we could charge for heat.
- Halving of the Green Heat Network Funding.
- Substantial increase in build costs, e.g installing the network's pipes (c.£4-5M).
- The grant received by SpArC for an air-source heat pump removes a key customer for the heat and potential site for the Energy Centre.

Coming at the end of 4 years during which a great deal of work has been invested in the project, these factors are very disappointing, since they mean that the heat network part of the business case is not viable at the moment. This decision has not been taken lightly, and we will be monitoring the situation to see if and when the circumstances change and make the network viable again.

Nevertheless, we still have the opportunity to go ahead with the Wind Turbine! This is a significant achievement since it is the only community-owned wind turbine to get planning permission in England in the last year. The turbine will be an important Community asset and help with local *and* national energy resilience, and that is where the team will be focussing their energy for the next few years.

The project's next steps will be to explore options for supplying electricity to homes and businesses, raise the capital required and continue the process of getting connection to the grid. For further details contact Dave Green dave@shareenergy.coop or climateaction@lightfootenterprises.org



Sheltered housing in Bishop's Castle

The Abbeyfield Bishop's Castle and District Society operates a small, sheltered house on Oak Meadow in Bishop's Castle, Shropshire SY9 5PA. We are a member society of the Abbeyfield Society, providing houses and homes to older people throughout the UK.

At Abbeyfield House, we aim to provide a peaceful, friendly atmosphere. Residents are encouraged to remain as independent as possible with a balance of privacy, support and security.

For more information, visit bishopscastle.abbeyfield.com

ABBNEYFIELD

COFFEE MORNING

At Abbeyfield, Oak Meadow, Bishop's Castle
at 10.30

Thursday 20th November

Everyone Welcome



Bus times –

Bishop's Castle To Shrewsbury/Shrewsbury to Bishop's Castle

Bus stops include : Lytham, White Grit, Hope, Snailbeach, Minsterley, Pontesbury, Han wood, Shrewsbury Hospital. For a detailed timetable visit
www.minsterleymotors.co.uk . 01743 791208

Bus 552/553 - Bishops' Castle to Shrewsbury

Depart - Monday - Friday

Bishop's Castle opp. Boars Head	07.20	09.40	12.20	13.30	15.40
Bishop's Castle Salop St Jct	07.22	09.42	12.22	13.22	15.42
Shrewsbury Hospital	08.13	10.33	13.08	14.18	16.28
Arrive Shrewsbury Bus Station	08.30	10.40	13.20	14.30	16.40

Depart - Saturday

Bishop's Castle opp. Boars Head	07.30	09.30	12.15	15.50
Bishop's Castle Salop St Jct	07.32	09.32	12.17	15.52
Shrewsbury Hospital	08.18	10.18	13.03	16.38
Shrewsbury Bus Station	08.30	10.30	13.15	16.50

Shrewsbury to Bishop's Castle

Depart - Monday - Friday

Shrewsbury Bus Station	07.35	10.05	12.00	14.00	16.25	17.40
Shrewsbury Hospital	-	10.17	12.12	14.12	16.37	17.52
Bishop's Castle Salop St Jct	08.33	11.03	12.58	14.58	17.23	18.38
Bishop's Castle opp. Boars Head	08.35	09.05	13.00	15.00	17.25	18.40

Depart - Saturday

Shrewsbury Bus Station	08.00	10.05	14.45	17.40
Shrewsbury Hospital	08.12	10.17	14.57	17.52
Bishop's Castle Salop St Jct	08.52	11.03	15.43	18.38
Bishop's Castle opp. Boars Head	09.00	11.05	15.45	18.40

Catherine Jones Music

t2lpiano@gmail.com 07407260949

www.catherinejonesmusic.co.uk

A life of musicmaking and music teaching

For inspiration and encouragement, whether you want to play the piano, cello or sing.

Catherine Jones now has a few vacancies whatever your age and stage from older toddlers to the retired, it is always a good time to learn music!

From classical to folk, to jazz to pop, whatever your taste!

J A Price Motor Engineers Ltd

SERVICE • MOT • SALES

01588 638585



A well established local business,
providing all aspects of garage
services.

For any enquiries please don't
hesitate to contact our friendly
team



01588 638585



japricemotorengineers@gmail.com



Lydham, Bishops Castle, SY9 5HB



**GOOD GARAGE SCHEME
REGISTERED MEMBER**

GoodGarageScheme.com



Abi Loffill chiropractor

LIFE WITHOUT PAIN

- Back pain
- Neck pain
- Shoulder pain
- Elbow pain
- Migraines and Headaches
- Minor sports injuries

01938 561787 www.abiloffill.co.uk

3 Shepherds Yard, Chirbury. SY15 6BH

Advertising in Newsletter

Newsletters are bi-monthly (every two months) April/May, June/July, August/September, October/November, December/January, and February/March : A total of 6 issues per year. Deadlines for copy are, as an absolute minimum, a full **15 working days before the 1st of the newsletter month**. Please send your copy or amendments in before this if you can, and especially if you are a first-time advertiser, to give enough time to resolve any issues.

Occasionally the Town Council may issue an extra newsletter, but this would normally be for public service information only and may not include adverts.

Costs:

Business card size per year: 60mm width x 30mm

£56 per year/6 issues (equates to £9.34 per issue*).

Quarter page or “double business card”: approximately 60mm width by 85/90mm depth, portrait orientation.

£100 per year/6 issues (equates to £16.64 per issue*).

Half page: 130mm width x 85/90mm depth, landscape orientation.

£170 per year/6 issues (£28.34 per issue*)

Full page: annual price before discount **£330 per year** (£55 per each issue, this is the pro rata price for single issue and 2 – 5 issue ads).

We give a discount of £55 for a full year paid in advance, i.e., £275

(equating to £45.84 per issue, or think of it as one issue free!). 130mm width x 180mm depth, portrait orientation.

We invoice in advance for the whole year, which runs from April to the following March. Advertisers who come on board during the year are invoiced pro rata for that year.

***Council reserves the right to charge an admin fee for single issue/one off business card, quarter or half page ads.**

Please note that if your ad is in colour, it should be suitable for black & white as well, as we cannot promise colour.

Information on Sizes: Please note that ad sizes are approximate and may differ somewhat from issue to issue. You will need different artwork for different sized ads because the proportions (width: depth) are different. Proportions are important for accurate reproduction of your advertisement.

Business card size: please submit your artwork depth, i.e., landscape orientation. Your ad may appear slightly larger in some newsletters depending on page spacing. Please ensure that your business card sized ad is twice as wide as it is high otherwise it will be distorted when reproduced.

Contact: AssistantClerk@bishopscastletowncouncil.gov.uk

Please ensure that we always have your correct current email address/contact details!

*Please note if invoice payment is not received by the due date,
the advertisement will be removed.*



Your Councillors

How to contact your Town Councillors:

We have "dot.gov" email now. After each councillor's name as written below just add @bishopscaletowncouncil.gov.uk

If you have any questions, please contact the Clerk.
01588 638141

Monday to Thursday 9.30am - 12.30pm

Councillor Sam Angell

Email: sam.angell

Councillor Lucy Blundell

Email: lucy.blundell

Councillor Jane Carroll

Tel: 01588 638467

Email: jane.carroll

Councillor Josh Dickin

Tel 07530691106

Email: josh.dickin

Councillor Ella Embrey

Email: ella.embrey

Councillor Michelle Gayle

Email: michellelisa.gayle

Councillor Tim Halford

Tel: 01588 638333

Email: tim.halford

Councillor Sharon Jones

Email: sharon.jones

Councillor Leon Kosciuczyk

Email: leon.kosciuczyk

Councillor Julie Magill

Email: Julie.magill

Councillor Grant Perry

Tel: 01588 638233

Email: grant.perry

Bishop's Castle News is published by

Bishop's Castle Town Council.

The Council maintains the right to edit all submissions.

Please send any contributions to be considered for the next issue by

17th November 2025 to:

Townclerk@bishopscaletowncouncil.gov.uk
AssistantClerk@bishopscaletowncouncil.gov.uk
or email the Editor

Tim.halford@bishopscaletowncouncil.gov.uk

For allotment enquiries, contact bcallotment@gmail.com



Physiotherapy delivered to your doorstep

Expert care in the comfort of your own home with our skilled physiotherapists. We can treat a wide range of conditions. Serving the South Shropshire region.



Adam Klee

15 years of experience across acute, orthopaedics, neurological, respiratory and rehabilitation



Helena Stones

15 years of experience across acute, orthopaedics, neurological, musculoskeletal and rehabilitation

**Get expert physiotherapy at home.
Book your session now!**

Call: 07502328076
www.athomephysio.co.uk
info@athomephysio.com



The present Climate & Nature Action Plan [CAP] is due for an update. We would be grateful if you could give us some feedback by answering the question below. The deadline for submission is 31st October.

1. How serious do you think the Climate & Nature crises are. Please tick or put a cross against one of the following:-

Not at all ☐ Fairly serious ☐ Very serious ☐

2. Which of the following issues are in your view important for the CAP to address?

- a. Improving nature (birds, insects, bees, plants, trees & wildflowers) ☐
- b. Reducing the impact of the climate emergency (e.g renewable energy) ☐
- c. Improving insulation to reduce energy use & make our homes warmer ☐
- d. Reducing pollution in our air and rivers ☐
- e. Reducing food, plastics, general waste and recycling more ☐
- f. Increasing the production & availability of food grown locally ☐
- g. Reducing transport's high carbon ☐
- h. Reducing our own and the Town's carbon footprint ☐

Other
ideas

- 3. Do you think that having Town Forums to discuss Community Resilience issues (e.g food, water, flooding) is a good idea?
Yes ☐ No ☐
- 4. Would you like to have more talks and workshops on climate and nature issues, e.g how to reduce your carbon footprint?
Yes ☐ No ☐
- 5. Can you suggest how to improve our younger generation's involvement in CAP issues? If yes please enter suggestion here

- 6. There are only a few of us, and we would welcome anyone who would like to help us develop the CAP. Please leave us your name & contact details, e.g e-mail or telephone.

- Link to the on-line version of the survey is here: <https://survey.sqolytics.com/r/fPriHh>
- Return boxes for paper copies are in the Town Hall and Enterprise House
- If you have any queries, please contact climateaction@lightfootenterprises.org.uk or phone 0300-1024458 #2
- You can download a copy from <https://lightfootenterprises.org/climate-action-group/>

THANK YOU!

