



BISHOP'S CASTLE



JUNE 2022

To
JULY 2022

ISSUE 81





The Mayor Josh Dickin

Hello from your new Mayor

I hope that the everyone enjoyed the extra-long weekend, celebrating The Queens Platinum Jubilee!

I would like to start by saying a big thanks to Cllr Perry, who has done a great job over the past 2 years as Mayor. It has been a challenging time to say the least.

I am truly honoured to be elected Mayor of Bishop's Castle, I feel very proud and passionate for my hometown. I really want to see what's best for the Castle!

Also, my newly elected Deputy is Cllr Andy Stelman, who has done fantastic work with the Food Bank and the youth project, to name a few.

Over the next couple of months, I will be taking time to really get to grips with the role of being Mayor!

I want to get out into the community, so if you've got an event planned, please get in touch with myself or the clerk.

My first engagement, along with Cllr Stelman was at Bishop's Castle Primary School. Both of us went and handed Town Council Platinum Jubilee mugs out to the primary school children. Cllr Stelman and I had a great time and it was so lovely to see the children having a really good time from what seemed a fun filled day of celebrating the Jubilee.

My main aims for the coming year is to see through the refurbishment of both the playing fields play areas and also Oak Meadow play area. Along with pushing forward with a refurbishment

of the Auction Yard toilets, And another aim is to recruit more councillors.

I will be working with Cllr Houghton and also the rest of the town councillors to liaise with Shropshire Council about improvement of highways and also just a general case for Bishop's Castle regarding services.

Have a great start to the summer and I look forward to updating you in the August/September issue.

Best Wishes

Josh Dickin
Mayor of Bishop's Castle



Going Wild in Bishop's Castle

Leaflet No 4

ROAD VERGES IN AND AROUND BISHOP'S CASTLE

Riddle: What meadows do we pass all the time but not see?

Answer: Our road verges.

While this may not be strictly true.....they are an important link.

Following on from last months NO MOW MAY leaflet, which suggested leaving the lawn uncut for the month of May to let species like cowslips and clover grow and encourage bugs and bees into your gardens; there is another ongoing initiative working to create more pockets of biodiversity in Shropshire.

Restoring Shropshire's Verges Project (RSVP for short) is a volunteer led conservation project that aims to manage roadside verges for wildlife by restoring flower rich grassland along our roads and lanes. Roadside verges are in a lot of ways the perfect place to encourage wildlife because they join other pockets of habitat together, such as churchyards and meadows. Like hedges they are the perfect wildlife corridor. Some are still species rich, and RSVP is working to keep them that way. Others are species poor and we so are starting from scratch..... literally.... by cutting and

removing the grass, scarifying and then sowing yellow rattle seed. Yellow rattle helps suppress some of the grass as it is semi parasitic, which in turn creates room for wildflowers.

RSVP is working with Shropshire Council to start changing the way our verges are managed. We have a contractor who is cutting and then removing the grass, which will be composted on a nearby farm.

Collecting the cuttings removes excess nutrients from going into the soil and this stops coarse grass and nettles taking over. Over the last 3 years we have planted over 500 plants of native species at the Bishop's Castle crossroads and along the roadside for 400 metres towards Lydbury North.



Safety First - Whilst we are really excited about the potential of these virtually untouched areas of potential habitat, we recognise that visibility is the most important issue. In time the reduction of

grasses and nettles will bring the overall height down, which will improve overall visibility. Because the plants don't grow so high, cutting verges less regularly is a safe practice. Coupled with this RSVP will always adhere to safety protocol when it comes to visibility. In places where visibility might become poor, for example at junctions and tight corners the council will keep grass mown short.

How about leaving an uncut verge alongside the pavement if you are next to one? You could join up with your neighbours to make a longer stretch so that there are more flowers providing nectar sources for insects. Always remove the grass clippings because that helps to reduce the fertility and gradually gives other plants a chance to flourish.

Plant life is a national organisation which specialises in wild plant conservation in the UK. Check out their excellent website and resources about road verges below:

<https://roadverges.plantlife.org.uk/>



Support Ukraine

Coffee and Chat Mornings

St John the Baptist Church

(outside if good weather)

Bishop's Castle SY9 5AF

Every 1st and 3rd Wednesday

10.30am to 12noon

Starting 1st June

ALL WELCOME

CONTACT:

Margaret Warren

Email: *mewarren56@gmail.com*

*All money raised will be ring-fenced and only
used to support Ukrainian families who are
placed in South Shropshire.*

VIVA OPERA!



THE
MARCHES
CHOIR

Singing our hearts out

Marches Choir

with Aber Opera

and featuring

Caroline Clarke - Soprano

Directed by Alistair Auld

Solos, Ensembles & Choruses

from

The Magic Flute - Mozart

L'Elisir D'Amour - Donizetti

I Lombardo - Verdi

The Merry Widow - Lehar

Die Fledermus - Johann Strauss

WALCOT HALL BALLROOM

Lydbury North SY7 8AZ

SUNDAY 3rd JULY at 7.30pm

TICKETS £15 (children and students free)
on 01588 650315 or online from TicketSource

www.marcheschoir.org.uk



Legal Issues?

Ten good reasons to choose Wace Morgan...

Wace Morgan provide reassuring, sound, professional and friendly legal advice when you wish it most

- Civil & Commercial Mediation
- Commercial & Agricultural
 - Debt Recovery
- Elderly Client & Care Funding
 - Employment
 - Family Matters
 - Military Law
 - Personal Injury
- Residential Property
- Wills, Trusts, Tax Planning & Probate



For the full range of services check out:
www.wacemorgan.co.uk

01743 280 100

21 St Mary's Street, Shrewsbury, SY1 1ED
help@wmlaw.co.uk www.wacemorgan.co.uk

 @WaceMorgan



BISHOP'S CASTLE

TOWN HALL

Listings for June 2022

For Further information on all our events look on our website
www.bishopscastletownhall.co.uk

Or contact us 01588 630023

June 2022

12th June – 9th July Art Exhibition Constance Wood Open during Town Hall opening hours, Mon – Sat 10am to 4pm. If you are travelling always check the exhibition is open on our website first www.bishopscastletownhall.co.uk

4th June Antiques and Flea Market 9am to 4pm

First Saturday of the month. Lift available. Free entry.

18th June Farmer's Market 9am to 1pm

Third Saturday of each month. Stalls include Meat, Poultry,

Specialist Teas, Cakes & Pasteries, Bread, Preserves, Honey, Chocolates

All produced locally.

18th June Concert Nick Hart - 'Ten English Folk Songs' Tour

Doors open 7.00pm for 7.30pm start

Book tickets at the Town Hall or online –
www.ticketsource.co.uk/bcth

Community updates

1. Road Closure:

A489 Lydham to Plowden **Start Date:** 30th May 2022 **End Date:** 18th July 2022 **Purpose:** Surface Dressing Site 173 (Please note that these works will not take place at the same time as Sites 16/18/132/02) Works to Include:- Prep Works - 26/05/2022-27/05/2022 Dressing Works - 09/06/2022-12/06/2022 Lining Works - 09/07/2022-10/07/2022 PLEASE NOTE THAT THESE WORKS ARE WEATHER DEPENDENT AND SUBJECT TO CHANGE **Works Promoter:** Shropshire Council **Works Promoter Ref:** UJ216SD-SH173-1 **Enforcement pattern for A489 Lydham to Plowden:** Monday - Friday 09:30 - 16:00 Saturday - Sunday 07:00 - 17:00 You can view the closure and diversion route by clicking here: <https://one.network/?tm=128695524> Should you have any queries regarding this closure, please call Customer Services on 0345 6789006, or contact the Street Works Team on street-works@shropshire.gov.uk.

2. **Stepping Stones Project Field Visit** – this Thursday 12th May. See attached poster.

3. Road Closure

although in Clun division this is applicable to residents of Mainstone and Cefn Einion. **Road Closure:** Llanhedrick Bridge, Clun **Start Date:** 13th June 2022 **End Date:** 22nd June 2022 **Purpose:** Road Closure to enable repair to damaged parapet **Works Promoter:** Shropshire Council **Works Promoter Ref:** UJ216BR-579100-2 **Enforcement pattern for Llanhedrick Bridge, Clun:** All the time. You can view the closure and diversion route by clicking here: <https://one.network/?tm=128760655> Should you have any queries regarding this closure, please call Customer Services on 0345 6789006, or contact the Street Works Team on street-works@shropshire.gov.uk.

4. Bishop's Castle Business Park:

Work is progressing well on the new Business Park at Bishop's Castle. Shropshire Council have agreed to undertake the fit out of the smaller – 2,000 sq ft – units so that will not now need to be undertaken by any prospective tenants. The larger units will still be a blank canvas, however Shropshire Council are happy to discuss requirements on a case-by-case basis with interested businesses. Please see the attached document and the contact details for any enquiries.

5. Abbeyfield House

In Bishop's Castle has vacancies for older people aged over 55 who would enjoy living in a house with a group of other residents. For further information please contact 01588 630000

6. SpArC Theatre :

the new Summer 2022 programme is available at www.sparctheatre.co.uk

7. Enterprise House now provides a flexible alternative to working from home with a co-working flexible workspace bookable by full and half days Low cost pay as you go options on single desk space, large and small meeting rooms, video conferencing and on site business services. WIFI available. Contact 01588 638038 for more information or email info@enterprisehouse.org.uk



BISHOP'S CASTLE BUSINESS PARK

**FLEXIBLE COMMERCIAL UNITS
FROM 2,000 - 15,000 SQFT**

**INVEST
SHROPSHIRE**

 **Shropshire
Council**

Why relocate your business to Bishop's Castle?

Unique opportunity to occupy brand new Commercial Units built to 'BREEAM Very Good' sustainability standards, available for business growth & expansion, located in one of the prettiest market towns in Shropshire.

Ability to customise Units for early occupiers.

Opportunity to apply for and access numerous grants & business support programmes in support of fit out of Units & purchase of new capital equipment to accelerate business growth.

A committed and loyal workforce living in close proximity to the Business Park, and a thriving business community.

Local Business Support partners - Enterprise South West (ESW) within the town and access to Marches Growth Hub.

Local Authority Landlord.

Offering a great quality of life within an Area of Outstanding Natural Beauty (AONB), the town itself has a vibrant community spirit with good local shops, schools and services including business support and resource facilities. There are direct road links to Shrewsbury and Ludlow and the wider area.



The Detail

Description

Portal steel framed.
Allocated parking and HGV turning points.
Electric vehicle charging points.
3.6-metre-high roller shutter doors.
Shell condition with the option to customise on a pre-let basis.

Accommodation

Floors finished to a power coated concrete slab.
Blockwork finish walls.
Ceilings to the underside of aluminium.
Insulated roof panels including roof lights.
Fitting and fixtures to be undertaken by Tenant, including options for mezzanine floor and other flexibility.

Rent

Available upon request

Use Classes

B2, B8 and E (g) (i, ii & iii)

Tenure

Available on a new lease on a mixture of terms.

Service Charge

There will be a separate service charge towards the maintenance and repairs including grounds maintenance.

Services

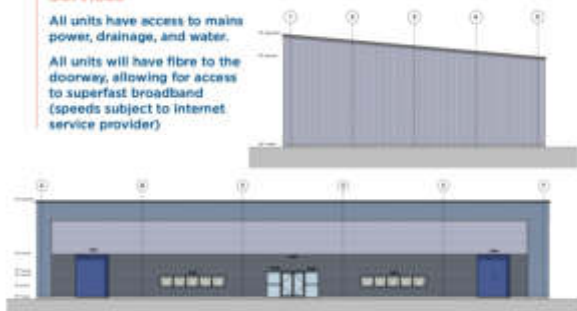
All units have access to mains power, drainage, and water.
All units will have fibre to the doorway, allowing for access to superfast broadband (speeds subject to internet service provider)

VAT

Payable on rent and service charges

Legal Costs

A contribution of in the region of £250 will be required.
A deposit equivalent to three months rent will be required prior to completion.



Site Map & Artist Impressions



Available Units

ALL ENQUIRIES
Shropshire Council Estates
01743 281082
estates@shropshire.gov.uk

INVEST SHROPSHIRE

Shropshire
Council

Site Progress November 2021



ALL ENQUIRIES

Shropshire Council Estates
01743 281082
estates@shropshire.gov.uk

**INVEST
SHROPSHIRE**



Nearest Postcode to development: SY9 5DW

22 miles to Shrewsbury
16 miles to Welshpool
10 miles to Craven Arms

Shropshire Council Misrepresentations

Whilst we have tried to ensure these details are accurate, if any point is of particular importance to you please contact us to check the information, particularly if viewing involves travelling some distance.

Shropshire Council gives notice that:

1. The particulars are set out as a general outline only for the guidance of the intended tenants and do not constitute, nor constitute part of, an offer or contract.
2. All descriptions, dimensions, reference to condition and necessary permissions for use and occupation and other details are given without responsibility and any intending tenant(s) shall not rely on them as statements or representations of fact, they must satisfy themselves by inspection or otherwise as to the correctness of each.
3. No person in the employment of Shropshire Council has any authority to make or give any representation or warranty whatever in relation to this land.
4. The reference to any plant, machinery, equipment, services, fixtures or fittings at the property shall not constitute a representation as to its state or condition, or that it is capable of fulfilling its function. Prospective tenants should satisfy themselves as to the fitness of such items for their requirements.

Supported by:



ALL ENQUIRIES

Shropshire Council Estates
01743 281082
estates@shropshire.gov.uk

**INVEST
SHROPSHIRE**



SATURDAY 30TH JULY 2022



**SAVE THE DATE
IT'S NOT ONE
TO MISS!**



**BISHOP'S CASTLE'S BEST KEPT
SECRETS REVEALED**



When could equity release be right for you?

A lifetime mortgage could help fill the gap in your finances, allowing the comfortable retirement you deserve.

- ✓ No monthly repayments
- ✓ Tax-free cash lump sum
- ✓ Holiday of a lifetime
- ✓ Remain in your own home



Pauline Johnson, trading as All kinds of Mortgages, is an appointed representative of The Right Mortgage Limited, which is authorised and regulated by the Financial Conduct Authority.

This is a lifetime mortgage. To understand the features and risks, please ask for a personalised illustration. Check that this mortgage will meet your needs if you want to move or sell your home or you want your family to inherit it. If you are in any doubt, seek independent advice. Our typical advice fee would be £995 payable on completion. A lifetime mortgage may impact your entitlement to means-tested benefits and in the inheritance you may leave.

FCA number: 403640

For a free qualified and impartial initial conversation contact us on

07974 250389

or enquiries@allkindsofmortgages.co.uk
[linkedin.com/in/allkindsofmortgages/](https://www.linkedin.com/in/allkindsofmortgages/)

YOGA & MEDITATION TEACHER

Hello everyone, I'd like to introduce myself, I am Jess and live just outside Bishops Castle. I have been teaching yoga & meditation for 7 years in London at several of the top studios. I teach a spectrum of styles including vinyasa, yin, pregnancy, meditation and kirtan at my home (image below). I am currently teaching **1 FREE** yoga class per week.



Get in touch if you're interested in a session!

JESSICA WOOD
07890 400 780

jessica@yoga-wood.com
www.jessicawoodyoga.com
[@jessicawoodyoga](https://www.instagram.com/jessicawoodyoga)

Available for private & group classes.

Abbeyfield House Cream Tea

The Abbeyfield House Cream Tea is back again this summer. So make a note of this date in your diary, Saturday 2nd July between 2 and 4 p.m. at Abbeyfield House, Oak Meadow, Bishop's Castle.

There will be a Bric a Brac stall along with Cakes, Produce and Bottle Stalls along with a

raffle, Entertainment for the afternoon will be provided by Harpist Kristina Norton. Everyone is welcome



CASTLE DOG GROOMERS

19 High Street, Bishops Castle,

Tel: 01588 630760, Facebook,

WWW.castledoggroomers.co.uk

Abbeyfield

Support and companionship just when you need it

**Are you looking for affordable Sheltered Accommodation
with your main meals provided in a homely environment?**

**Abbeyfield House situated in Oak Meadow SY9 5PA
close to the Town Centre of Bishop's Castle
offers all this, and independent living
with a balance of privacy, support and security**

**Please telephone 01588 630000
for more information**

Independent Provident Society No. 27259R

TSA Regulator of Social Housing No. H4156

*We offer a wide range
of legal services
for both the individual
and business*



BISHOP'S CASTLE | T: 01694 723818

CHURCH STRETTON | T: 01694 723818

WELSHPOOL | T: 01743 248148

SHREWSBURY | T: 01743 248148

LUDLOW | T: 01584 878456

KNIGHTON | T: 01547 528332

TELFORD | T: 01952 403000

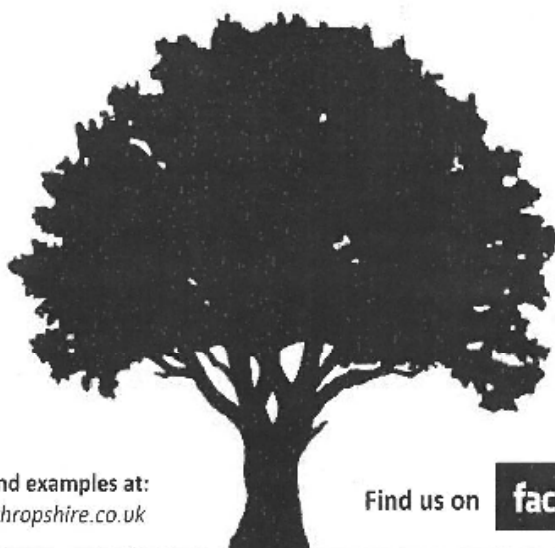
www.pcblaw.co.uk



S. MORRAY

07534 947 946
01588 630 247

Landscape, Garden and Arboricultural Services



More info and examples at:
treesurgeryshropshire.co.uk

Find us on

facebook

- Patios & paths
- All types of fencing
- Stone wall building
- Tree surgery
- Woodland clearance
- Holiday home care
- Grass cutting
- Hedge cutting
- Gardening
- Turf laying
- Log store building
- Garden structures

Public liability insured up to £5m with full NPTC tree surgery certificates

NO JOB IS TOO BIG OR SMALL

Please call for an obligation free quote



**Sports Massage * Deep Tissue Massage
Myofascial Release Therapy
Cupping Massage * Swedish Body Massage
Reflexology * Indian Head Massage
Warm Bamboo Massage * Reiki**

**Jenny Hudson
Sports & Holistic Massage Therapist**

07968087981 01588630717

Bishop's Castle * Newtown * Corporate * Mobile



**Therapies for physical and mental wellbeing
www.serenityholisticmassage therapies.co.uk**



**STONE HOUSE
Union Street
Bishop's Castle
SY9 5AJ**

We offer Residential and EMI Care, day care places available on a Tuesday in our day care centre which offers activities & both assisted and un-assisted baths. We also offer respite beds when available.

For more information:

Contact Keturah Bloor
Telephone— 01588 63848
Email kbloor@coveragecareservice.co.uk

THE LUCKY HARE

On 'The Cobbles', between the Town Hall and The House On Crutches Museum.



Amazing selection of Beautiful and Unusual gifts, for All occasions and pockets.

'The Lucky Hare' own brand 100% Natural Aromatherapy Candles, with up to 40 hrs burn time.

Plus : A large selection of attractively Sandblasted Glassware, Hand Painted Tiles/ Ceramic Ware, Glass Animals, Birthstone/Celebration Hearts, Hanging Glass Ornaments and T-light Holders.

Dairy Dreams Ice-Creams, Upper Oaks Shropshire Fudge, Friendly Soaps/Shampoo/Conditioner Bars and other Natural Eco-Friendly products.

Locally made Jewellery and Artwork, Fatyz Candles, Essential Oils and Diffusers, Bishop's Castle T-Towels, 'Hare' and 'Tree Of Life' themed ornaments/gifts and more.

Gift Vouchers Also Available.

Thursday, Friday, Saturday 10.30 am - 4 pm

**And other days, when the weather is good,
or if it's a Bank Holiday.**

Look forward to seeing you soon.
Tim and Michèle

How to contact your Town Councillors:

Councillor Jane Carroll

Tel: 01588 638467

Email:

jane.carrol@bishopscastletowncouncil.gov.uk

Councillor Ruth Houghton

Tel: 01588 638352

Email:

ruthm.houghton55@bishopscastletowncouncil.gov.uk

Councillor Andy Stelman

Tel 07773006413

Email

andy.stelman@bishopscastletowncouncil.gov.uk

Councillor Josh Dickin

Tel 07530691106

Email

josh.dickin@bishopscastletowncouncil.gov.uk

Councillor Grant Perry

Tel: 01588 638233

Email:

grant.perry@bishopscastletowncouncil.gov.uk

Councillor Stuart Morris

Tel: 01588 630114

Email:

stuart.morriss@bishopscastletowncouncil.gov.uk

Councillor Bamber Hawes

Tel: 07957 667847

Email: bamber.hawes@bishopscastletowncouncil.gov.uk

Councillor Tim Halford

Tel: 01588 638333

Email: timhalford@yahoo.com

Councillor Daphne Du Cros

daphne@littlewoodbatch.co.uk

Town Clerk: 01588 638141

townclerk@bishopscastletowncouncil.gov.uk

Monday to Thursday 9.30am—12.30pm

For allotment enquiries please
contact:

assistantclerk@bishopscastletowncouncil.gov.uk

Jilly Evans - Heather

A.C.O.H., A.R.T., S.P.D.A., Bowtech, N.S.T.

28 Years as a fully qualified practitioner

Neuro-Muscular Massage + Deep Tissue Aromatherapy

With Thai Massage Stretches Advanced Reflexology

Bowen Technique and NST. NLP. EFT

**For most of your physical
Or emotional healing needs**

Call Jilly for an appointment or further info

On 01588 638 935

Chimney Sweep

Stacks Baffle for a Clean Sweep

Stove Repairs, Glass, Grates
Cows and Chimney Uring.

Tim Nye

Tel 0783 8888 547 or 01588 638304

H.E.A.T.A.S. Registered

15 Years Experience

3 Kerry Green

Bishops Castle



NORMAN JONES

BISHOP'S CASTLE

Domestic Appliance Repairs

Same Day/Next Day Service

Repairs ..PETE.. 07971 252069

Sales .. Norman .. 07816 875233

Home 01588 638677



UNION STREET GARAGE (BISHOP'S CASTLE LIMITED)

MOT'S FOR CLASS 4 VEHICLES
SERVICING AND REPAIRS
DIESEL AND RED DIESEL SALES
TELEPHONE (01588) 638349

www.unionstreetgarage.co.uk

WE ACCEPT ALL MAJOR CREDIT CARDS



THREE
TUNS
EST 1642

HOME OF THE MIGHTY
XXX!

www.threetunsbrewery.co.uk

CNEVANS & SONS

ORIGINAL BUILDERS, EXTENSION BUILDERS

- General Builders
- Renovations
- Extensions
- Free Quotations
- Over 40 years' experience
- Local family run business

01588 634 107

cnevansandsons@outlook.com

Bishops Castle, Shropshire

A.J. Pugh Butchers



Bishop's Castle,
4b Church Street.
Phone 01588 638584

Knighton,
Whitwell, Bridge Street.
Phone 01547 520785

ajpughbutchers@yahoo.co.uk
www.ajpughbutchers.co.uk

THE OPTICIAN

25 High Street, Bishops Castle

Eye Examinations - Contact Lenses

High Quality Digital Retinal Photography

Wide range of traditional & designer frames

Open Mon - Sat 9.30am - 5pm Friday opening until 7pm

01588 63 88 33

It's clear to see why so many people come to us by recommendation

MINI DIGGER & OPERATOR FOR HIRE

John Deere 550C 3000H

All aspects of excavation work undertaken.
Landscaping, drainage, footings,
driveways, drainage, etc.
Qualified operator with machine.



Based in Bishop's Castle, covering
surrounding areas.

www.mcdonalds.co.uk



Safe, confidential counselling & psychotherapy for adults over
the age of 18

Located in Lydbury North

Tel: 07818062017

Email: rose@handokocounselling.com

www.handokocounselling.com

Sophie Paints

Painter & Decorator

sophiepaintsdecorating@gmail.com
01493 629393

WE WOULD LIKE TO HEAR FROM YOU!

Phone: 01588 638141 or

email:

bishopscastlenewsletter@gmail.com

DROVERS TRAVEL

30 Church Street, Bishop's Castle

For all your Travel Requirements !

Flight Only, City Breaks, Europe & Worldwide Holidays,

Cruise, Accommodation only, Adventure & Touring

Holiday's plus Tailor Made Trips.

Full Financial Protection as accredited body member of Global Travel Group with
membership number S7242



GLOBAL TRAVEL GROUP

Tel : 01588 630333 email : agent@droverstravel.com

www.droverstravel.com



All Aspects of Foot Care Undertaken
in Bishops Castle & Surrounding Area

- Nail Trimming • Corns & Calluses • Ingrown Nail • Hard Skin Removal
- Thick Nail Reduction • Cracked Heels • Diabetic Foot Care • Verrucae

“Amazing lovely lady, professional, caring,
quick to respond and provide appointments.
Highly recommend.” Mrs N.J

Contact Vikki for a Home Visit
info@marchesfootcare.co.uk

Tel. 07779 976 648

Vikki Robson
DipCFHP MPSPract



Qualified Insured and a member of the Professional Standards
Authority Accredited Register for Foot Health Practitioners

Shropshire Hardwoods

[home page](#)

[gallery](#)

[sourcing timber](#)

[the ash tree project](#)



Contact me:

Anthony Jones

Pound House, Union Street

Bishops Castle, SY9 5AJ

07814215180

info@shropshirehardwoods.com

All aspects of timber joinery and construction are undertaken, we source, mill and dry your timber in our own facility. Doors, windows, staircases, kitchens, bathrooms. Floorboards and timber frames for buildings.

A logo for Dave Taylor Electrical Services. It features a stylized house icon with a lightning bolt inside, followed by the text "Dave Taylor" in a large serif font and "Electrical Services" in a smaller sans-serif font below it.

We are a friendly and reliable electrical firm based in Bishops Castle, covering Shropshire and Powys. We carry out work from simple lighting and power, to larger contracts and bespoke lighting installations. Please call or email for a no obligation estimate.

- Domestic, commercial, agricultural & industrial work undertaken.
- Qualified & OLEV registered for EV charge point installations for the domestic & workplace schemes.
- NICE approved inspector & installer of Domestic Ventilation.
- Experienced in fault finding & rectification.
- "Landlord checks" - Electrical Test and Certification Reports.

A black and white photograph showing a person's hands using a tool to work on an electrical component, possibly a switch or outlet, within a wall or panel.

davetaylerelectrical@gmail.com | 07814 707 100

We sensitively source locally grown timber which we convert and kiln dry. The main timbers are oak, ash, alder, sycamore, cedar and larch. We can also supply holly, London plane, walnut, cherry and chocolate oak. Most of our timber comes from the Shropshire Hills (AONB) and the National Trust and from managed woodlands.

Enterprise House Resource Centre

We Print & Design



Leaflets Invites
Booklets Posters
Greetings Cards


DON'T FORGET!

We Photocopy & Scan



Business Cards
Flyers Menus

We Laminate & Bind



Price Lists Invoices
Letterheads Typing
Business Support

Contact us now for a quote

Printing/photocopying to maximum A3 size. We can scan and print from your own artwork or we can assist with design for you ... just ask.

Station Street, Bishop's Castle, SY9 5RQ Tel: 01588 638038

email: info@enterprisehouse.org.uk

www.enterprisehouse.org.uk

Event Equipment Hire Service



Village Outreach


Planning an event post-covid?



**NEED TO HIRE A MARQUEE,
GAZEBOS?
TABLES, CHAIRS, STAGING,
PA SYSTEMS, LIGHTS
we can help
CALL 01588 630097**

villageoutreach@bishopscastle.co.uk

www.enterprisehouse.org.uk/outreach

 [villageoutreachBC](https://www.facebook.com/villageoutreachBC)



Suffering from Buffering?

Fibre Broadband is coming to Bishops Castle from just £26 a month.

SWS
BROADBAND
Shropshire Wideband Services Ltd

Register your interest at: www.swsbroadband.net
Or call our Shropshire based team on 0333 700 0227

Mousematt

No-nonsense **Computer Repairs**

Experienced, Qualified IT Engineer

Apple & Microsoft Certified

We Come to Your Home or Office

No Hidden Costs (no call-out fee)

No Fix, No Fee

01686 412 753

07843 440 789

Experienced **Piano Tuner &
Technician**

Brass, String, Woodwind & Electric

Instruments Repaired & Tuned

Musical Accessories Supplied

Mouse Music

SHROPSHIRE FOOT PRACTICE

Nicola Collins Dip MCFHP MAFHP

Registered Foot Health Practitioner

Home Visits

- Nail Trimming
- Corn Removal
- Calluses Reduced
- Fungal Infections
- Ingrown Toenails
- Foot care for Diabetics



Qualified in 2006
Introductory Price £18
(Normal Price £28)



For an appointment:

☎ 07880 97 20 02

Bus timetable for bus routes 552 / 553 Bishop's Castle to Shrewsbury

Monday to Friday times (school days)				Saturday		
	Leaves		Arrives	Leaves		Arrives
Bishop's Castle opposite the Boar's Head all go via the Hospital	7.30		8.30	7.30		8.30
	9.40		10.40	9.30		10.30
	12.20		13.20	12.15		13.15
	13.30		14.30	15.50		16.50
	15.40		16.40			
Shrewsbury Stand all go via the Hospital	7.35		8.35	8.00		9.00
	10.05		11.05	10.05		11.05
	12.00		13.00	14.45		15.45
	14.00		15.00	17.40		18.40
	16.25		17.25			
	17.40		18.40			

Bus timetable for bus route 745 Bishop's Castle to Ludlow

Monday and Friday only				Leaves Ludlow		
	Leaves		Arrives		Arrives	
Bishop's Castle	9.15		10.25		13.15	14.50

Bus timetable for bus route Bishop's Castle to Pontesbury 775

Bishop's Castle	14.40		15.10		09.30		10.00
-----------------	-------	--	-------	--	-------	--	-------