



BISHOP'S CASTLE



**AUGUST 2022
To
SEPTEMBER 2022**



ISSUE 82





The Mayor Josh Dickin

Welcome to this summer edition of the Town Council's newsletter. I hope you all are enjoying the summer period, and all get a chance of some sort of break!

I am a few months into my new role as Mayor, and I am enjoying doing so to. I've been heartened by all the support from so many

people. I hope I am doing you all proud and will continue to give my upmost best for Bishop's Castle.

It's been a busy few months, lots going on in and around town. The Carnival events over the weekend seemed to go down a treat, I thank all those who turned up and supported these events and a big thank you to the volunteers too.

These events were all to raise the Carnival's profile again after some tricky years. In this newsletter you'll find a poster with the AGM date. Please do attend if possible, we are hoping to tie the town's 450 years charter celebrations in with the Carnival also.

Another great event was Party in the Park. Again, run by a group of committed volunteers, who did a superb job yet again, thank you! These groups are another cog in the big Bishop's Castle wheel. Making for such a great town to live in!

Just a few pieces to remind us all, are, parking and dog fouling. There've been quite a number of cases of blocked entrances, and parking on corners and junctions. Please keep in mind that residents need access to properties and deliveries at shops and also the emergency services need

to get through our tight streets. And there seems to be increased dog fouling, it's not nice to have around town, so please pick up after your pet. Thank you for your co-operation.

I was contacted by a group from in-town who go out and litter pick around Bishop's Castle, so I thank them for doing this, it is helping keep the town tidy. They are looking for more people to join them. They meet on the 1st Friday of every month at 10 am in the Auction Yard. If you have gloves and high vis then please bring them, litter pickers and bags are provided. For more information contact Lissi Swales on 01588 638715.

Lissi also looks after the playing fields garden areas, which I am very grateful for. She is looking for more people to help out, again please contact Lissi on the number above.

Thank you for reading, Enjoy the summer!

Best Wishes

Josh Dickin, Mayor of Bishop's Castle

COMMUNITY CELEBRATION DAY

Did you attend the recent community celebration day at SpArC? Even if you did not, we would appreciate some feedback on the event, and therefore have enclosed one of the comment cards from the day in some of these NEWSLETTERS.

Although targeted at those in attendance, please feel free to add any comments to the card and return it to either the

TOWN HALL or DROVERS TRAVEL

one completed card will be selected to win a prize.

Thank you!

Help Bishop's Castle Carnival!

Obviously, this year there was not a true carnival
Sunday!

We held smaller more manageable events in a week
To get the carnival back properly on its feet next year,

We need more volunteers to join the committee.

It will also be the 450 year Anniversary of the Charter
which was handed to the town in 1573 by Elizibeth I

So keep that in mind too..... Something that's worth
celebrating!!



If you are interested in joining us
Please come along to our AGM

On Wednesday 14th September
At The Kings Head
7:30 PM

Please contact Josh Dickin
On 07530691106 for more info!



Support Ukraine

Coffee and Chat Mornings

St John the Baptist Church

(outside if good weather)

Bishop's Castle SY9 5AF

Every 1st and 3rd Wednesday

10.30am to 12noon

Starting 1st June

ALL WELCOME

CONTACT:

Margaret Warren

Email: *mewarren56@gmail.com*

*All money raised will be ring-fenced and only
used to support Ukrainian families who are
placed in South Shropshire.*

Legal Issues?

Ten good reasons to choose Wace Morgan...

Wace Morgan provide reassuring, sound, professional and friendly legal advice when you wish it most


- Civil & Commercial Mediation
- Commercial & Agricultural
 - Debt Recovery
- Elderly Client & Care Funding
 - Employment
 - Family Matters
 - Military Law
 - Personal Injury
- Residential Property
- Wills, Trusts, Tax Planning & Probate



For the full range of services check out:
www.wacemorgan.co.uk

01743 280 100

21 St Mary's Street, Shrewsbury, SY1 1ED
help@wmlaw.co.uk www.wacemorgan.co.uk

 @WaceMorgan



BISHOP'S CASTLE

TOWN HALL

Listings for Aug/Sept 2022

For Further information on all our events look on our website
www.bishopscastletownhall.co.uk or contact us 01588 630023

August 2022

16th July to 11th August Art Exhibition – EVOLVE – Midlands Textile Forum.

Open during Town Hall opening hours, Mon – Sat 10am to 4pm. If you are travelling, always phone 01588 630023 to check the exhibition is open as occasionally, we have to close for weddings.
www.bishopscastletownhall.co.uk
www.bishopscastletownhall.co.uk

6th August - Antiques and Flea Market 9am to 4pm.

1st Saturday of each month. Lift available. Free entry.

6th August - Will Barnes Quartet Concert: Join Will Barnes, Guitar, Clovis Phillips, Base, Jack Gonzalez, Piano, James Batten, Drums, for an evening of jazz. 6.30pm doors open 7pm start Tickets £15 can be purchased from the Town Hall or on-line
www.ticketsource.co.uk/bcth

20th August - Farmer's Market 9am to 1pm: 3rd Saturday of each month. Stalls include Meat, Poultry, Specialist Teas, Cakes & Pastries, Bread, Preserves, Honey, Chocolates. All produced locally.

20th August to 17th September Art Exhibition by Andrew Jenkin, watercolour artist who lives and works in North Wales. His landscapes depict a range of scenery, woodlands and buildings across England and Wales. Open from 10am to 4pm Monday-Saturday. If you are travelling always phone 01588 630023 to check the exhibition is open as occasionally, we have to close for weddings.

www.bishopscastletownhall.co.uk

20th and 21st August - Challenge Walk- Bishop's Castle Challenge Walk 24 mile hike with 4000ft of ascent over stunningly beautiful uplands of East Powys and the Shropshire Hills. Do it in a day or over two days. Entrance fee £10. Book online

www.bcchallengewalk.co.uk

All proceeds to local charities, Community food bank and SpArC.

September 2022

20th August to 17th September Art Exhibition by Andrew Jenkin, watercolour artist who lives and works in North Wales. His landscapes depict a range of scenery, woodlands and buildings across England and Wales. Open from 10am to 4pm Monday-Saturday. If you are travelling always phone 01588 630023 to check the exhibition is open as occasionally, we have to close for weddings. www.bishopscastletownhall.co.uk

3rd September - Antiques and Flea Market 9am to 4pm

1st Saturday of the month. Lift available. Free entry.

15th September - Going Wild Talk: Start time is 8pm, entry free but donations welcomed.

17th September - Michaelmas Craft Fair 10am-4pm

2 floors full of stalls including - candles, jewellery, soaps, textiles, craft materials and knitted items.

24th September - Art Exhibition by Sue Gould

Sue lives deep within the Shropshire countryside and takes inspiration from the natural world that surrounds her. Open from 10am to 4pm Monday-Saturday. If you are travelling, always phone 01588 630023 to check the exhibition is open as occasionally, we have to close for weddings. www.bishopscastletownhall.co.uk

24th September Farmer's Market 9am to 1pm: Third Saturday of each month. Stalls include Meat, Poultry, Specialist Teas, Cakes & Pastries, Bread, Preserves, Honey, Chocolates. All produced locally.

Community updates

1. Road Closure:

A489 Lydham to Plowden **Start Date:** 30th May 2022 **End Date:** 18th July 2022 **Purpose:** Surface Dressing Site 173 (Please note that these works will not take place at the same time as Sites 16/18/132/02) Works to Include:- Prep Works - 26/05/2022-27/05/2022 Dressing Works - 09/06/2022-12/06/2022 Lining Works - 09/07/2022-10/07/2022 PLEASE NOTE THAT THESE WORKS ARE WEATHER DEPENDENT AND SUBJECT TO CHANGE **Works Promoter:** Shropshire Council **Works Promoter Ref:** UJ216SD-SH173-1 **Enforcement pattern for A489 Lydham to Plowden:** Monday - Friday 09:30 - 16:00 Saturday - Sunday 07:00 - 17:00 You can view the closure and diversion route by clicking here: <https://one.network/?tm=128695524> Should you have any queries regarding this closure, please call Customer Services on 0345 6789006, or contact the Street Works Team on street-works@shropshire.gov.uk.

2. **Stepping Stones Project Field Visit** – this Thursday 12th May. See attached poster.

3. Road Closure

although in Clun division this is applicable to residents of Mainstone and Cefn Einion. **Road Closure:** Llanhedrick Bridge, Clun **Start Date:** 13th June 2022 **End Date:** 22nd June 2022 **Purpose:** Road Closure to enable repair to damaged parapet **Works Promoter:** Shropshire Council **Works Promoter Ref:** UJ216BR-579100-2 **Enforcement pattern for Llanhedrick Bridge, Clun:** All the time. You can view the closure and diversion route by clicking here: <https://one.network/?tm=128760655> Should you have any queries regarding this closure, please call Customer Services on 0345 6789006, or contact the Street Works Team on street-works@shropshire.gov.uk.

4. Bishop's Castle Business Park:

Work is progressing well on the new Business Park at Bishop's Castle. Shropshire Council have agreed to undertake the fit out of the smaller – 2,000 sq ft – units so that will not now need to be undertaken by any prospective tenants. The larger units will still be a blank canvas, however Shropshire Council are happy to discuss requirements on a case-by-case basis with interested businesses. Please see the attached document and the contact details for any enquiries.

5. Abbeyfield House

In Bishop's Castle has vacancies for older people aged over 55 who would enjoy living in a house with a group of other residents. For further information please contact 01588 630000

6. SpArC Theatre :

the new Summer 2022 programme is available at www.sparctheatre.co.uk

7. Enterprise House now provides a flexible alternative to working from home with a co-working flexible workspace bookable by full and half days Low cost pay as you go options on single desk space, large and small meeting rooms, video conferencing and on site business services. WIFI available. Contact 01588 638038 for more information or email info@enterprisehouse.org.uk

How to help your surgery work for you

Appointments with a GP across the country are hard to come by and often involve waiting for some days or even weeks to be seen by a doctor. But GP surgeries these days have many more medical and other health related staff such as nurse practitioners, physician associates and social prescribers to help patients. Over coming issues of this Newsletter we are going to be finding out about the work of some of these other surgery staff in the Bishop's Castle Medical Practice and how they can help patients with their various problems.

This issue we are talking to Claire Lennox the Reception Manager at our practice. Claire explained what she and her team of four others in reception do. Claire usually starts work at 7.45 and the phone lines to the surgery open at 8.00. Much of the receptionists' time is taken with talking to patients and trying to arrange for them to see or speak to the most appropriate member of the surgery staff as soon as possible. This involves asking patients some questions about what is wrong with them. Some people find this intrusive, but it enables the receptionists to identify whether someone could be seen by, for example, a nurse practitioner rather than a GP and therefore get their problem attended to more quickly. Alternatively, they might need to arrange for a GP to phone a patient if this is more appropriate.

Of course, reception staff, like all members of the Practice team, are bound by confidentiality rules and all information is treated as strictly confidential. Claire pointed out that if patients feel an issue is very private and do not wish to say what it is, this is their right and is respected, but it may lead to a longer wait as GPs are booked up days and weeks in advance.

Claire said that unfortunately some patients are aggressive when they can't get an immediate appointment with a particular GP and they can be abusive to the reception staff. Fortunately, the receptionists are trained in conflict resolution and are supported by others at the Practice.

In between responding to patients booking appointments in person and by telephone the receptionists deal with the many emails that come in and go out from the surgery. Some of these are routine requests for repeat prescriptions and blood tests. They also deal with often urgent information and requests coming from local care homes, and letters to and from hospital referrals, as well as the results that arrive from medical tests carried out in previous days and weeks. These emails are either filed or given to GPs for action, including urgent follow up.

The work of the receptionists ends with the closing of the surgery at 5.00, 6.30 or 8.00 depending on the day of the week. Claire says no two days are the same and how much she enjoys working with the reception and wider practice team to help our local community.

Bishop's Castle Patients Group

bcpatientsgroup@gmail.com

<https://bcpq.org.uk>

BUSINESS PARK SCULPTURE

As part of the new business park development at Bishops Castle, local businesses or artists are being invited to create an art installation that would be fabricated and erected as a permanent feature within the business park.

The budget for this art installation has been set at

£15,000 - £30, 000. Full details are within the brief available from the link below or from the Town Council Website or Facebook page and any questions should in the first instance be directed to

invest@shropshire

click [here](#) for details



BISHOP'S CASTLE BUSINESS PARK

**FLEXIBLE COMMERCIAL UNITS
FROM 2,000 - 15,000 SQFT**

**INVEST
SHROPSHIRE**

 **Shropshire
Council**

Why relocate your business to Bishop's Castle?

Unique opportunity to occupy brand new Commercial Units built to 'BREEAM Very Good' sustainability standards, available for business growth & expansion, located in one of the prettiest market towns in Shropshire.

Ability to customise Units for early occupiers.

Opportunity to apply for and access numerous grants & business support programmes in support of fit out of Units & purchase of new capital equipment to accelerate business growth.

A committed and loyal workforce living in close proximity to the Business Park, and a thriving business community.

Local Business Support partners - Enterprise South West (ESW) within the town and access to Marches Growth Hub.

Local Authority Landlord.

Offering a great quality of life within an Area of Outstanding Natural Beauty (AONB), the town itself has a vibrant community spirit with good local shops, schools and services including business support and resource facilities. There are direct road links to Shrewsbury and Ludlow and the wider area.



The Detail

Description

Portal steel framed.
Allocated parking and HGV turning points.
Electric vehicle charging points.
3.6-metre-high roller shutter doors.
Shell condition with the option to customise on a pre-let basis.

Accommodation

Floors finished to a power coated concrete slab.
Blockwork finish walls.
Ceilings to the underside of aluminium.
Insulated roof panels including roof lights.
Fitting and fixtures to be undertaken by Tenant, including options for mezzanine floor and other flexibility.

Rent

Available upon request

Use Classes

B2, B8 and E (g) (i, ii & iii)

Tenure

Available on a new lease on a mixture of terms.

Service Charge

There will be a separate service charge towards the maintenance and repairs including grounds maintenance.

Services

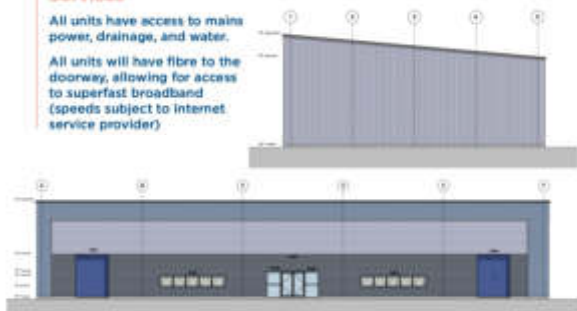
All units have access to mains power, drainage, and water.
All units will have fibre to the doorway, allowing for access to superfast broadband (speeds subject to internet service provider)

VAT

Payable on rent and service charges

Legal Costs

A contribution of in the region of £250 will be required.
A deposit equivalent to three months rent will be required prior to completion.



Site Map & Artist Impressions



Available Units



ALL ENQUIRIES
Shropshire Council Estates
01743 281082
estates@shropshire.gov.uk

INVEST SHROPSHIRE

Shropshire
Council

Site Progress November 2021



ALL ENQUIRIES

Shropshire Council Estates
01743 281082
estates@shropshire.gov.uk

**INVEST
SHROPSHIRE**



**Nearest Postcode to
development: SY9 5DW**

22 miles to Shrewsbury
16 miles to Welshpool
10 miles to Craven Arms

Shropshire Council Misrepresentations

Whilst we have tried to ensure these details are accurate, if any point is of particular importance to you please contact us to check the information, particularly if viewing involves travelling some distance.

Shropshire Council gives notice that:

1. The particulars are set out as a general outline only for the guidance of the intended tenants and do not constitute, nor constitute part of, an offer or contract.
2. All descriptions, dimensions, reference to condition and necessary permissions for use and occupation and other details are given without responsibility and any intending tenant(s) shall not rely on them as statements or representations of fact, they must satisfy themselves by inspection or otherwise as to the correctness of each.
3. No person in the employment of Shropshire Council has any authority to make or give any representation or warranty whatever in relation to this land.
4. The reference to any plant, machinery, equipment, services, fixtures or fittings at the property shall not constitute a representation as to its state or condition, or that it is capable of fulfilling its function. Prospective tenants should satisfy themselves as to the fitness of such items for their requirements.

Supported by:



ALL ENQUIRIES

Shropshire Council Estates
01743 281082
estates@shropshire.gov.uk

**INVEST
SHROPSHIRE**





THE LUCKY HARE

On 'The Cobbles', between the Town Hall and The House On Crutches Museum.

25% off most items from 1st August until mid September.

Amazing selection of Beautiful and Unusual gifts, for All occasions and pockets.

'The Lucky Hare' own brand 100% Natural Aromatherapy Candles, with up to 40 hrs burn time.

Plus : A large selection of attractively Sandblasted Glassware, Hand Painted Tiles/ Ceramic Ware, Glass Animals, Birthstone/ Celebration Hearts, Hanging Glass Ornaments and T-Light Holders. Dairy Dreams Ice-Creams, Upper Oaks Shropshire Fudge, Friendly Soaps/Shampoo/ Conditioner Bars and other Natural Eco-Friendly products. Locally made Jewellery and Artwork, Flatyz Candles, Essential Oils and Diffusers, Bishop's Castle T-Towels, 'Hare' and 'Tree Of Life' themed ornaments/gifts and more.

Open : Thursday, Friday, Saturday
10.30 am - 4 pm in August.

Saturdays - and other days when the weather is good
- in September.

Look forward to seeing you soon, Tim and Michèle

When could equity release be right for you?

A lifetime mortgage could help fill the gap in your finances, allowing the comfortable retirement you deserve.

- ✓ No monthly repayments
- ✓ Tax-free cash lump sum
- ✓ Holiday of a lifetime
- ✓ Remain in your own home



Pauline Johnson, trading as All kinds of Mortgages, is an appointed representative of The Right Mortgage Limited, which is authorised and regulated by the Financial Conduct Authority.

This is a lifetime mortgage. To understand the features and risks, please ask for a personalised illustration. Check that this mortgage will meet your needs if you want to move or sell your home or you want your family to inherit it. If you are in any doubt, seek independent advice. Our typical advice fee would be £995 payable on completion. A lifetime mortgage may impact your entitlement to means-tested benefits and in the inheritance you may leave.

FCA number: 403640

For a free qualified and impartial initial conversation contact us on

07974 250389

or enquiries@allkindsofmortgages.co.uk
[linkedin.com/in/allkindsofmortgages/](https://www.linkedin.com/in/allkindsofmortgages/)


YOGA & MEDITATION TEACHER

Hello everyone, I'd like to introduce myself, I am Jess and live just outside Bishops Castle. I have been teaching yoga & meditation for 7 years in London at several of the top studios. I teach a spectrum of styles including vinyasa, yin, pregnancy, meditation and kirtan at my home (image below). I am currently teaching **1 FREE** yoga class per week.



Get in touch if you're interested in a session!

JESSICA WOOD
07890 400 780

jessica@yoga-wood.com
www.jessicawoodyoga.com
 [@jessicawoodyoga](https://www.instagram.com/jessicawoodyoga)

Available for private & group classes.

DAVID HEDGE

YOGA CLASSES £8.00pp

David is British Wheel of Yoga qualified, and has 22 years teaching experience.



Norbury Hall
Tues 7.30pm -
9.00pm

Lydbury Hall
Fridays 10.30am - 12.00pm,
and 1.30pm - 3.00pm

Call: 07870 936889,
or:
01588 630223

MB GRASSCUTTING

For regular lawn cuts and garden tidy ups

Providing a friendly, reliable and regular
service

No job too small! Locally based

References available

For a free quote please call Mark

07388 676775 or drop me an email:
mbgrasscutting@gmail.com



CASTLE DOG GROOMERS

19 High Street, Bishops Castle,
Tel: 01588 630760, Facebook,
WWW.castledoggroomers.co.uk

Abbeyfield

Support and companionship just when you need it

**Are you looking for affordable Sheltered Accommodation
with your main meals provided in a homely environment?**

**Abbeyfield House situated in Oak Meadow SY9 SPA
close to the Town Centre of Bishop's Castle
offers all this, and independent living
with a balance of privacy, support and security**

**Please telephone 01588 630000
for more information**

Independent Provident Society No. 27259R

TSA Regulator of Social Housing No. H4156

*We offer a wide range
of legal services
for both the individual
and business*



BISHOP'S CASTLE | T: 01694 723818

CHURCH STRETTON | T: 01694 723818

WELSHPOOL | T: 01743 248148

SHREWSBURY | T: 01743 248148

LUDLOW | T: 01584 878456

KNIGHTON | T: 01547 528332

TELFORD | T: 01952 403000

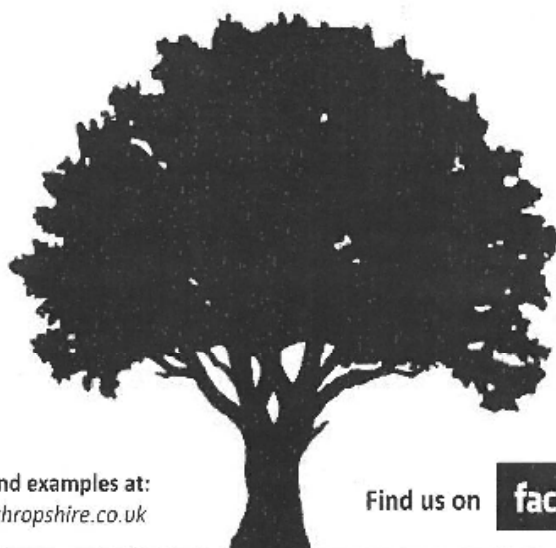
www.pcblaw.co.uk



S. MORRAY

07534 947 946
01588 630 247

Landscape, Garden and Arboricultural Services



More info and examples at:
treesurgeryshropshire.co.uk

Find us on

facebook

- Patios & paths
- All types of fencing
- Stone wall building
- Tree surgery
- Woodland clearance
- Holiday home care
- Grass cutting
- Hedge cutting
- Gardening
- Turf laying
- Log store building
- Garden structures

Public liability insured up to £5m with full NPTC tree surgery certificates

NO JOB IS TOO BIG OR SMALL

Please call for an obligation free quote



**Sports Massage * Deep Tissue Massage
Myofascial Release Therapy
Cupping Massage * Swedish Body Massage
Reflexology * Indian Head Massage
Warm Bamboo Massage * Reiki**

**Jenny Hudson
Sports & Holistic Massage Therapist**

07968087981 01588630717

Bishop's Castle * Newtown * Corporate * Mobile



**Therapies for physical and mental wellbeing
www.serenityholisticmassage therapies.co.uk**



**STONE HOUSE
Union Street
Bishop's Castle
SY9 5AJ**

We offer Residential and EMI Care, day care places available on a Tuesday in our day care centre which offers activities & both assisted and un-assisted baths. We also offer respite beds when available.

For more information:

Contact Keturah Bloor
Telephone— 01588 63848
Email kbloor@coveragecareservice.co.uk

PUBLIC RIGHTS OF WAY

Around Bishop's Castle we have an extensive network of Public Rights of Way, footpaths,

bridleways and byways. These are used extensively by local residents and by visitors to the town. We have a number of Walking for Pleasure leaflets available from the Town Hall and on line, and the Shropshire Way passes through the area. A variety of walks are organised by the Bishop's Castle Walking Group, the Walking Festival, Blood Cancer UK etc and attract a lot of visitors. We all have responsibilities as far as PRW's are concerned as well as to the environment as a whole. This applies to landowners, the Local Authority and the general public.

Landowner.

"As the owner or occupier of land with a public right of way across it, you must keep the route visible and not obstruct or endanger users"

Local Authority.

"As a local highway authority you have statutory duties to record and keep public rights of way open."

The General Public.

"Members of the public are responsible for keeping to the public rights of way and ensuring their dogs are under close control, do not stray from the prw and do not chase farm animals"

During the last 12 months it has been noticed that a number of paths have had crops planted

across them and either the path has not been reinstated or done so inadequately. This not only makes it difficult for walkers but it also encourages people to walk off the right of way. There have also been cases of barbed wire being put across footpaths and other farm equipment being used to block rights of way. There is specific advice on the HM gov.uk website for landowners. Farmers have also, over the last couple of years, seen increasing numbers of the public walking off the public rights of way, or in fields where there is no right of way at all. This particularly applies to dog walkers. One farmer has reported a cow having a still birth which turned out to be due to a disease carried in dog faeces. Please, if you have a dog use a bag to clear it up and take it home to dispose of it in your rubbish bin.

We are very fortunate in Shropshire that the County Council still funds a



We are a friendly and reliable electrical firm based in Bishop's Castle, covering Shropshire and Powys. We carry out work from simple lighting and power, to larger contracts and bespoke lighting installations. Please call or email for a no obligation estimate.

- Domestic, commercial, agricultural & industrial work undertaken.
- Qualified & CLEV registered for EV charge point installations for the domestic & workplace schemes.
- NICE approved inspector & installer of Domestic Ventilation.
- Experienced in fault finding & rectification.
- "Landlord checks" - Electrical Testation Condition Reports.



davetaylorelectrical@gmail.com | 07814 757 100

Rights of Way team and provides financial support to replace damaged stiles and gates. They also support a number of volunteer teams working across the county including the Bishop's Castle Parish Paths Partnership, that help maintain the rights of way, clearing overgrown vegetation and repairing or replacing damaged stiles and gates.

If you come across any problems on our public rights of way network or would like more

information about the BC P3 volunteer team please contact Jane Carroll, our Town Councillor with responsibility for PRW's on jane.carroll@gmail.com

SHROPSHIRE HARDWOODS

Bishop's Castle

www.shropshirehardwoods.com

For: All aspects of timber framed living spaces, garden rooms, and chalets

Also: Custom made Architectural and Restoration Joinery

Manufactured at our micro sawmill and joinery workshop in Bishop's Castle, from locally sourced timber, milled and prepared by us.

For enquiries, estimates, and more information on how we source our trees, minimise timber miles, and manage our waste, please contact Anthony on: 07814 215180, or email: info@shropshirehardwoods.com

Also associated with Golden Fire Nuggets

www.goldenfirenuggets.co.uk

How to contact your Town Councillors:

Councillor Jane Carroll

Tel: 01588 638467

Email: jane.carrol@gmail.com

Councillor Ruth Houghton

Tel: 01588 638352

Email: Ruth.Houghton@shropshire.gov.uk

Councillor Andy Stelman

Tel 07773006413

Email andystelman@icloud.com

Councillor Josh Dickin

Tel 07530691106

Email bcbc97@outlook.com

Councillor Grant Perry

Tel: 01588 638233

Email: grantperry24@icloud.com

Councillor Stuart Morris

Tel: 01588 630114

Email: stuartmorrisstfc@btinternet.com

Councillor Bamber Hawes

Tel: 07957 667847

Email: Info@specialprojects.co.uk

Councillor Tim Halford

Tel: 01588 638333

Email: timhalford@yahoo.com

Councillor Daphne Du Cros

daphne@littlewoodbatch.co.uk

Town Clerk: 01588 638141

townclerk@bishopscastletowncouncil.gov.uk

Monday to Thursday 9.30am—12.30pm

For allotment enquiries please contact:

assistantclerk@bishopscastletowncouncil.gov.uk

Jilly Evans - Heather

A.C.O.H., A.R.T., S.P.D.A., Bowtech, N.S.T.

28 Years as a fully qualified practitioner

Neuro-Muscular Massage + Deep Tissue Aromatherapy

With Thai Massage Stretches Advanced Reflexology

Bowen Technique and NST. NLP. EFT

**For most of your physical
Or emotional healing needs**

Call Jilly for an appointment or further info

On 01588 638 935

Chimney Sweep

Stacks Baffle for a Clean Sweep

Stove Repairs, Glass, Grates
Cauls and Chimney Lining

Tim Nye

Tel 0783 8888 547 or 01588 638304

H.E.A.T.A.S. Registered

15 Years Experience

3 Kerry Green

Bishops Castle



NORMAN JONES

BISHOP'S CASTLE

Domestic Appliance Repairs

Same Day/Next Day Service

Repairs ..PETE.. 07971 252069

Sales .. Norman .. 07816 875233

Home 01588 638677



UNION STREET GARAGE (BISHOP'S CASTLE LIMITED)

MOT'S FOR CLASS 4 VEHICLES
SERVICING AND REPAIRS
DIESEL AND RED DIESEL SALES
TELEPHONE (01588) 638349

www.unionstreetgarage.co.uk

WE ACCEPT ALL MAJOR CREDIT CARDS



THREE
TUNS
EST 1642

HOME OF THE MIGHTY
XXX!

www.threetunsbrewery.co.uk

01588 638349

CNEVANS & SONS

GENERAL BUILDERS, EXTENSION BUILDERS

- General Builders
- Renovations
- Extensions
- Free Quotations
- Over 40 years' experience
- Local family run business

01588 634 107

cnevansandsons@outlook.com

Bishops Castle, Shropshire

A.J. Pugh Butchers



Bishop's Castle,
4b Church Street.
Phone 01588 638584

Knighton,
Whitwell, Bridge Street.
Phone 01547 520785

ajpughbutchers@yahoo.co.uk
www.ajpughbutchers.co.uk

THE OPTICIAN

25 High Street, Bishops Castle

Eye Examinations - Contact Lenses

High Quality Digital Retinal Photography

Wide range of traditional & designer frames

Open Mon - Sat. Late night Friday opening until 7pm

01588 63 88 33

It's clear to see why so many people come to us by recommendation

MINI DIGGER & OPERATOR FOR HIRE

John Deere 550C 3000H

All aspects of excavation work undertaken.
Landscaping, drainage, footings,
driveways, drainage, etc.
Qualified operator with machine.



Based in Bishop's Castle, covering
surrounding areas.

www.mcdonalds.co.uk



Safe, confidential counselling & psychotherapy for adults over
the age of 18

Located in Lydbury North

Tel: 07818062017

Email: rose@handokocounselling.com

www.handokocounselling.com

Sophie Paints

Painter & Decorator

sophiepaintsdecorating@gmail.com

07493 629393

WE WOULD LIKE TO HEAR FROM YOU!

Phone: 01588 638141 or

email:

bishopscastlenewsletter@gmail.com

DROVERS TRAVEL

30 Church Street, Bishop's Castle

For all your Travel Requirements !

Flight Only, City Breaks, Europe & Worldwide Holidays,

Cruise, Accommodation only, Adventure & Touring

Holiday's plus Tailor Made Trips.

Full Financial Protection as accredited body member of Global Travel Group with
membership number S7242



GLOBAL TRAVEL GROUP

Tel : 01588 630333 email : agent@droverstravel.com

www.droverstravel.com



Marches Foot Care

NEW CLINIC
The Old Fire Station
Station Street
Bishops Castle
SY9 5AQ

All Aspects of Foot Care Undertaken in
Bishops Castle & Surrounding Area

- Nail Trimming • Corns & Calluses • Ingrown Nail • Hard Skin Removal
- Thick Nail Reduction • Cracked Heels • Diabetic Foot Care • Verrucae

"I am now 'walking on air' as Vikki has been and fixed my feet! She is a complete professional with a very kind, personable disposition." Mrs LF

Contact Vikki for a Home Visit
info@marchesfootcare.co.uk

Tel. 07779 976 648

Vikki Robson
DipCFHP MPSPract



Qualified Insured and a member of the Professional Standards
Authority Accredited Register for Foot Health Practitioners

Enterprise House Resource Centre

We Print & Design



Leaflets Invites
Booklets Posters
Greetings Cards


DON'T FORGET!

We Photocopy & Scan



Business Cards
Flyers Menus

We Laminate & Bind



Price Lists Invoices
Letterheads Typing
Business Support

Contact us now for a quote

Printing/photocopying to maximum A3 size. We can scan and print from your own artwork or we can assist with design for you ... just ask.

Station Street, Bishop's Castle, SY9 5RQ Tel: 01588 638038

email: info@enterprisehouse.org.uk

www.enterprisehouse.org.uk

Event Equipment Hire Service



Village Outreach

Planning an event post-covid?




**NEED TO HIRE A MARQUEE,
GAZEBOS?**

**TABLES, CHAIRS, STAGING,
PA SYSTEMS, LIGHTS**
we can help

CALL 01588 630097

villageoutreach@bishopscastle.co.uk

www.enterprisehouse.org.uk/outreach

 **villageoutreachBC**



Suffering from Buffering?

Fibre Broadband is coming to Bishops Castle from just £26 a month.

SWS
BROADBAND
Shropshire Wideband Services Ltd

Register your interest at: www.swsbroadband.net
Or call our Shropshire based team on 0333 700 0227

Mousematt

No-nonsense **Computer Repairs**

Experienced, Qualified IT Engineer

Apple & Microsoft Certified

We Come to Your Home or Office

No Hidden Costs (no call-out fee)

No Fix, No Fee

01686 412 753

07843 440 789

Experienced **Piano Tuner &
Technician**

Brass, String, Woodwind & Electric

Instruments Repaired & Tuned

Musical Accessories Supplied

Mouse Music

SHROPSHIRE FOOT PRACTICE

Nicola Collins Dip MCFHP MAFHP

Registered Foot Health Practitioner

Home Visits

- Nail Trimming
- Corn Removal
- Calluses Reduced
- Fungal Infections
- Ingrown Toenails
- Foot care for Diabetics



Qualified in 2006
Introductory Price £18
(Normal Price £28)



For an appointment:

☎ 07880 97 20 02

Bus timetable for bus routes 552 / 553 Bishop's Castle to Shrewsbury

Monday to Friday times (school days)				Saturday		
	Leaves		Arrives	Leaves		Arrives
Bishop's Castle opposite the Boar's Head all go via the Hospital	7.30		8.30	7.30		8.30
	9.40		10.40	9.30		10.30
	12.20		13.20	12.15		13.15
	13.30		14.30	15.50		16.50
	15.40		16.40			
Shrewsbury Stand all go via the Hospital	7.35		8.35	8.00		9.00
	10.05		11.05	10.05		11.05
	12.00		13.00	14.45		15.45
	14.00		15.00	17.40		18.40
	16.25		17.25			
	17.40		18.40			

Bus timetable for bus route 745 Bishop's Castle to Ludlow

Monday and Friday only				Leaves Ludlow		
	Leaves		Arrives		Arrives	
Bishop's Castle	9.15		10.25		13.15	14.50

Bus timetable for bus route Bishop's Castle to Pontesbury 775

Bishop's Castle	14.40		15.10		09.30		10.00
-----------------	-------	--	-------	--	-------	--	-------



BISHOP'S CASTLE
TOWN COUNCIL



Orslynn J Riggins, Cllr, HC CDO, MLCM
Town Clerk
Tel: 01585 638541
Email: townclerk@bishopscastle.co.uk

The Town Hall
Bishop's Castle
Shropshire
SY9 5BG

Bishop's Castle Town Council COVID VOLUNTEERING AWARDS

Bishop's Castle Town Council will be giving special awards to deserving members of the community and businesses who volunteered their help with medication and grocery collections plus other assistance, to benefit residents of Bishop's Castle and the surrounding areas during the Covid Pandemic. Nomination forms are available from the Council offices,

Drovers Travel and the Council website

<http://bishopscastletowncouncil.gov.uk/>, or via email.

Please return your Completed Nomination forms by

Wednesday 31st August 2022

These special awards will be presented at

**12 noon, Sunday 18th September 2022, at the
Church, following the Mayor's Sunday Parade
and Service at the Church**

All are welcome





BISHOP'S CASTLE TOWN COUNCIL



Gwenyn J Rippetts Clerk, The CEO, MFLCM
Town Clerk
Tel: 01588 638141
Email: townclerk@bishopscastle.co.uk

The Town Hall
Bishop's Castle
Shropshire
SY9 5BG

Nomination

Name of Nominee

Contact Details of Nominee

Reason/s for nomination

Proposer (must not be related to the nominee)

Criteria for the award:

Individuals and Businesses who have made a substantial contribution to the residents of Bishop's Castle, throughout the Covid period.

Please return form to: Bishop's Castle Town Council offices, The Town Hall,
Bishop's Castle, Shropshire, SY9 5BG no later than mid-day, 31st August 2022
townclerk@bishopscastletowncouncil.gov.uk